

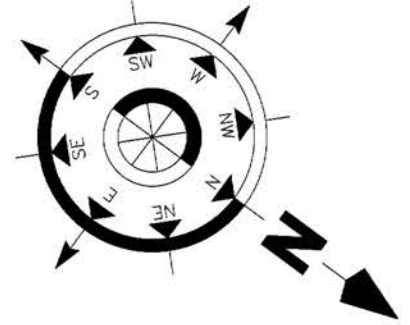


ARLINGTON PARK

MAJID®

ARLINGTON PARK

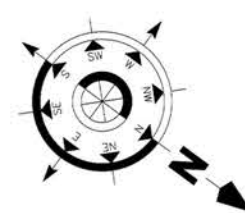
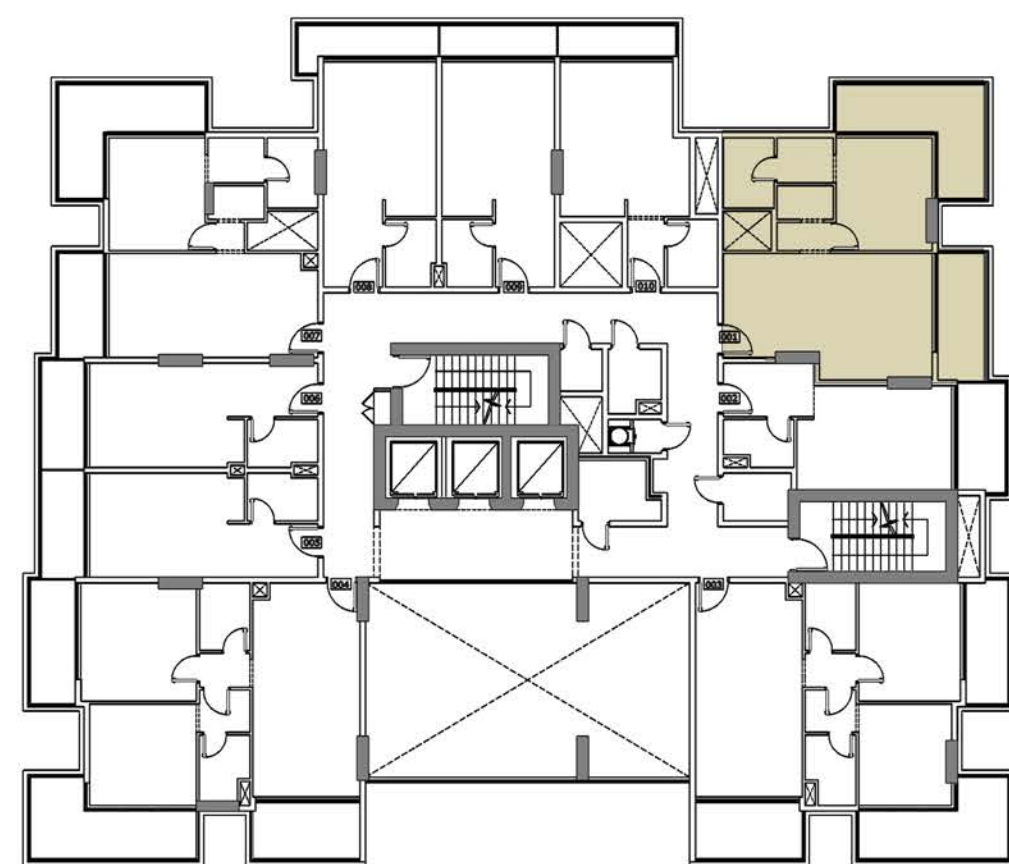
NEIGHBOUR 50.00M



FIRST FLOOR PLAN

Disclaimer: all pictures, plans, layouts, information, data and details included in this brochure are indicative only and may change at any time up to the final 'as built' status in accordance with the final designs of the project, regulatory approvals and planning permissions.

ARLINGTON PARK



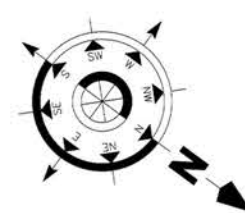
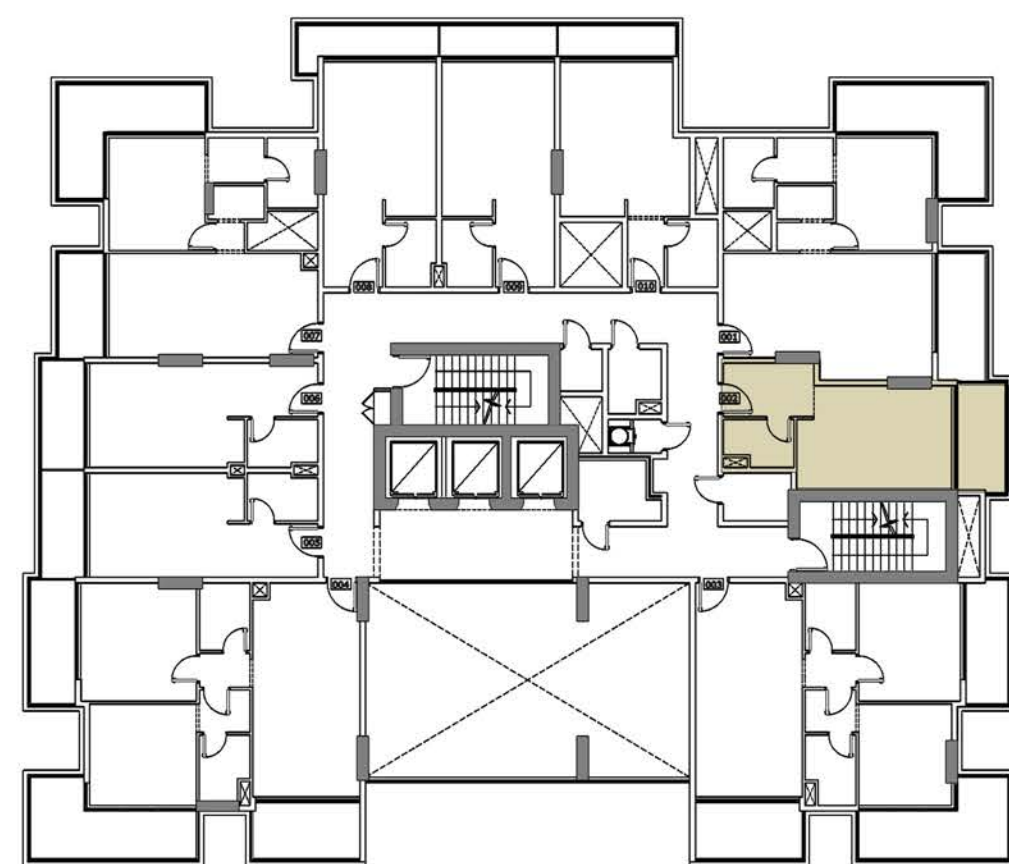
1st FLOOR 1 BEDROOM APARTMENT

UNIT AREA	660 Sq. ft.
TERR/BAL AREA	241 Sq. ft.
TOTAL AREA	901 Sq. ft.
UNITS	101

Disclaimer: all pictures, plans, layouts, information, data and details included in this brochure are indicative only and may change at any time up to the final 'as built' status in accordance with the final designs of the project, regulatory approvals and planning permissions.



ARLINGTON PARK



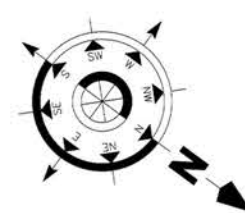
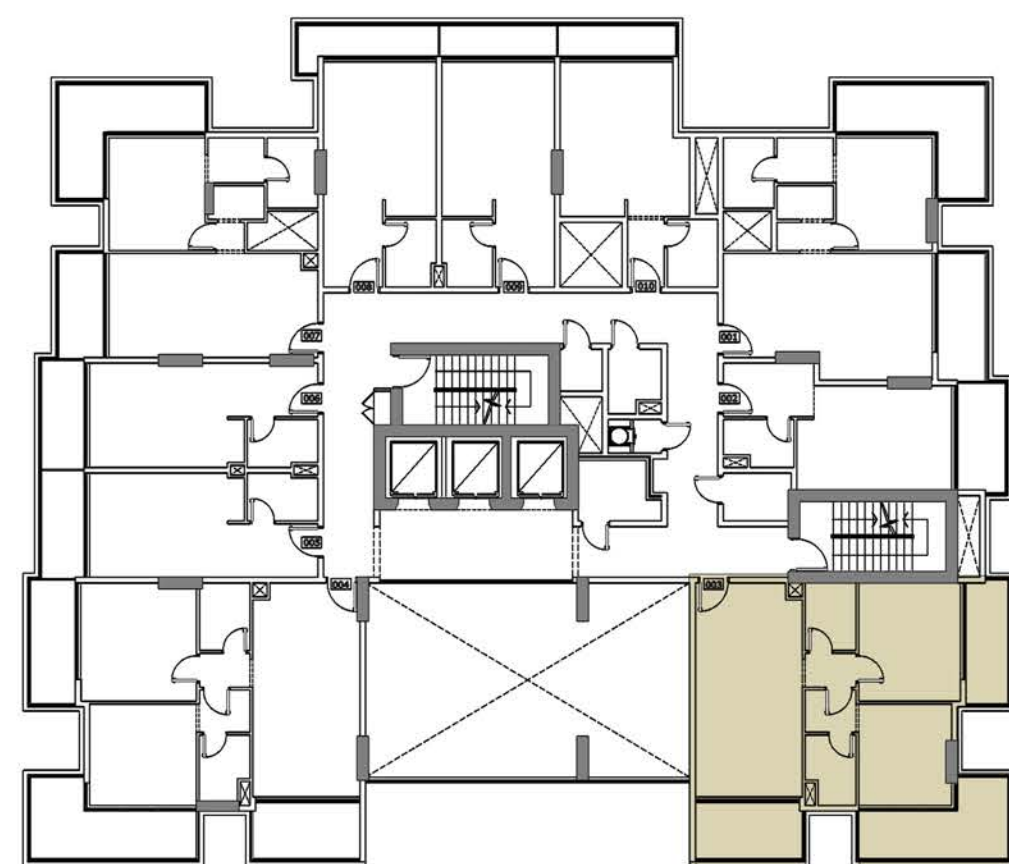
1st FLOOR STUDIO APARTMENT



UNIT AREA	356 Sq. ft.
TERR/BAL AREA	77 Sq. ft.
TOTAL AREA	433 Sq. ft.
UNITS	102

Disclaimer: all pictures, plans, layouts, information, data and details included in this brochure are indicative only and may change at any time up to the final 'as built' status in accordance with the final designs of the project, regulatory approvals and planning permissions.

ARLINGTON PARK



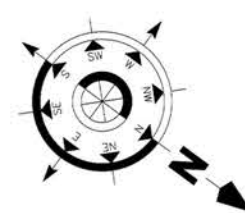
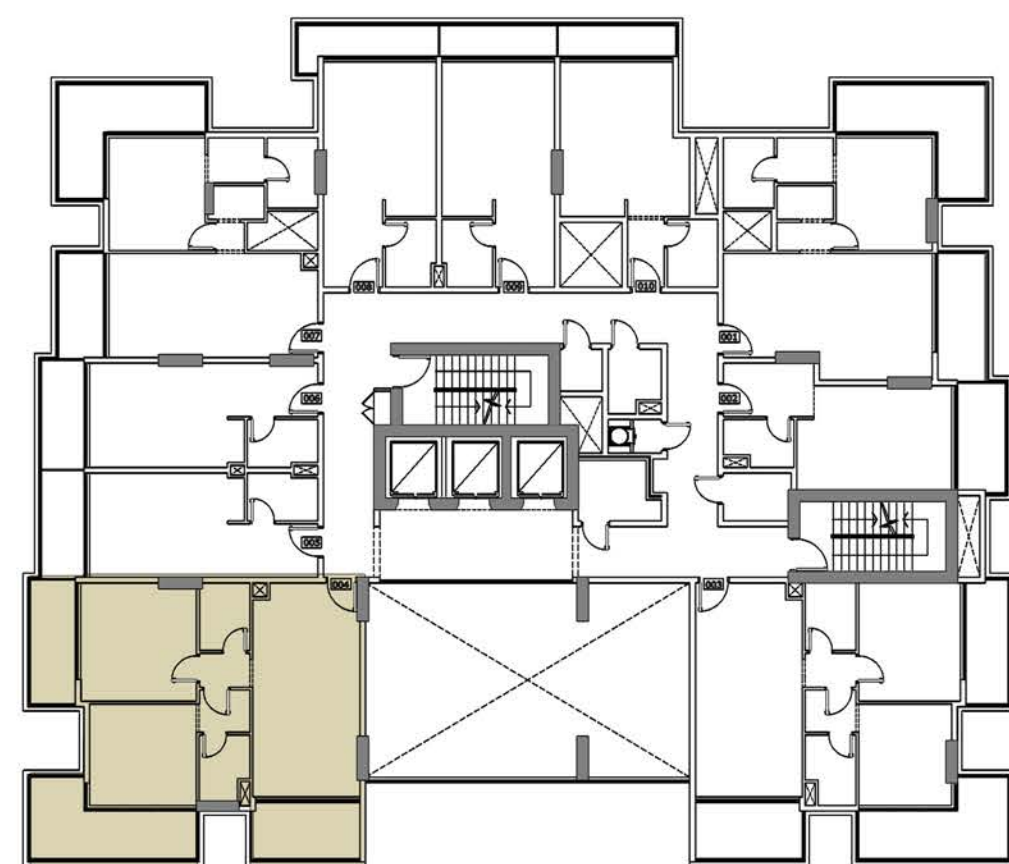
1st FLOOR 2 BEDROOM APARTMENT

UNIT AREA	809 Sq. ft.
TERR/BAL AREA	296 Sq. ft.
TOTAL AREA	1105 Sq. ft.
UNITS	103

Disclaimer: all pictures, plans, layouts, information, data and details included in this brochure are indicative only and may change at any time up to the final 'as built' status in accordance with the final designs of the project, regulatory approvals and planning permissions.



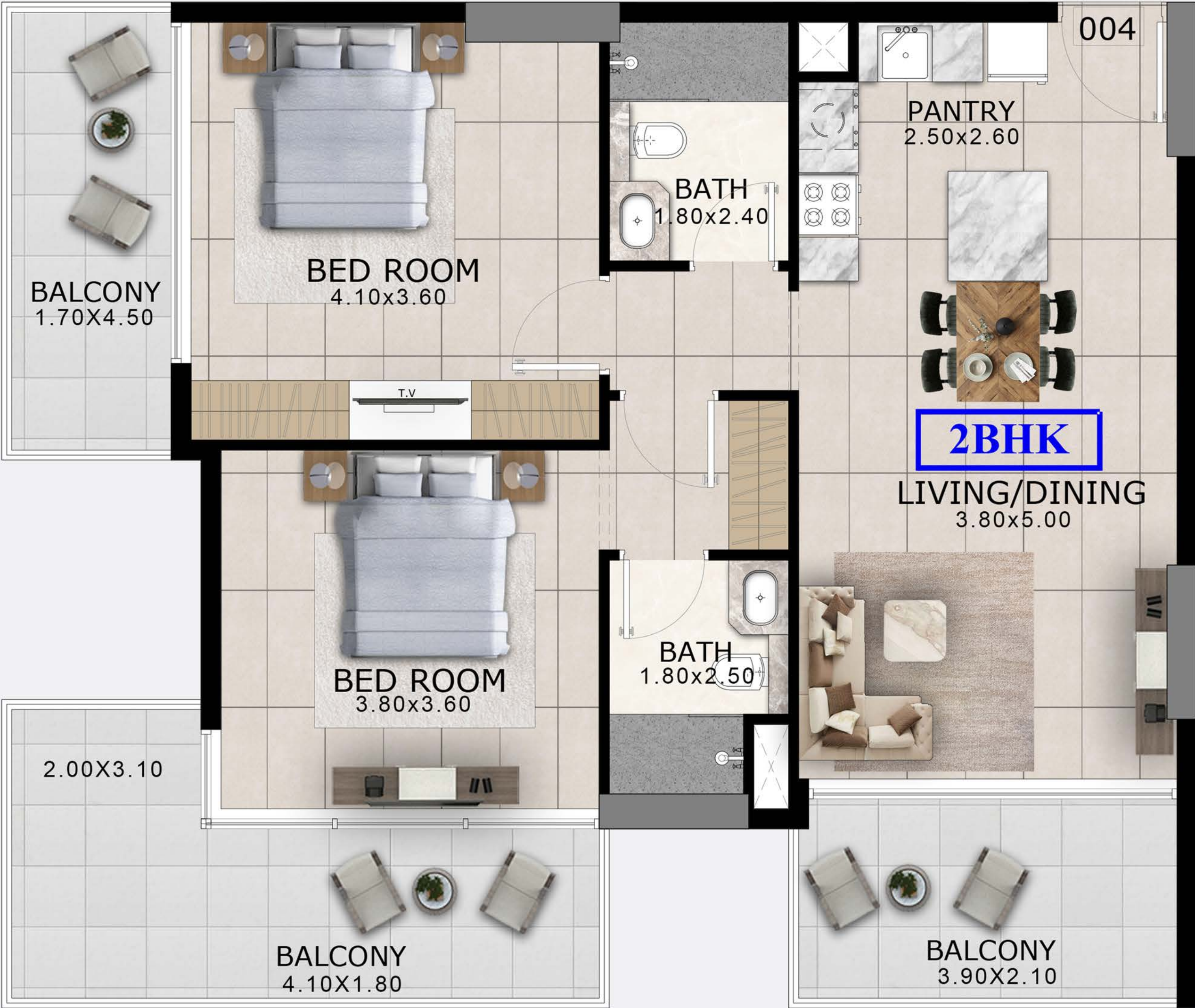
ARLINGTON PARK



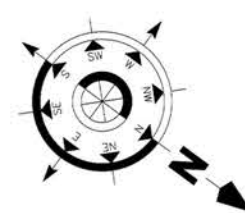
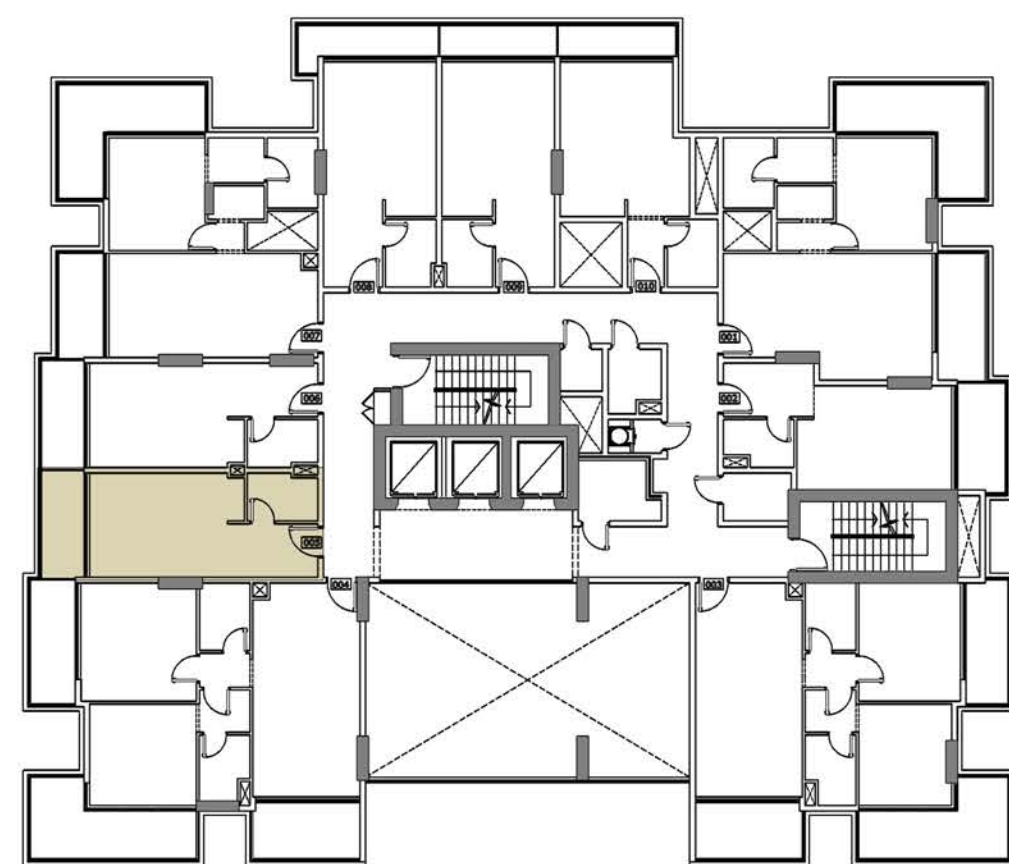
1st FLOOR 2 BEDROOM APARTMENT

UNIT AREA	847 Sq. ft.
TERR/BAL AREA	314 Sq. ft.
TOTAL AREA	1161 Sq. ft.
UNITS	104

Disclaimer: all pictures, plans, layouts, information, data and details included in this brochure are indicative only and may change at any time up to the final 'as built' status in accordance with the final designs of the project, regulatory approvals and planning permissions.



ARLINGTON PARK



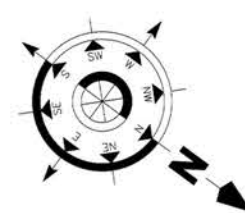
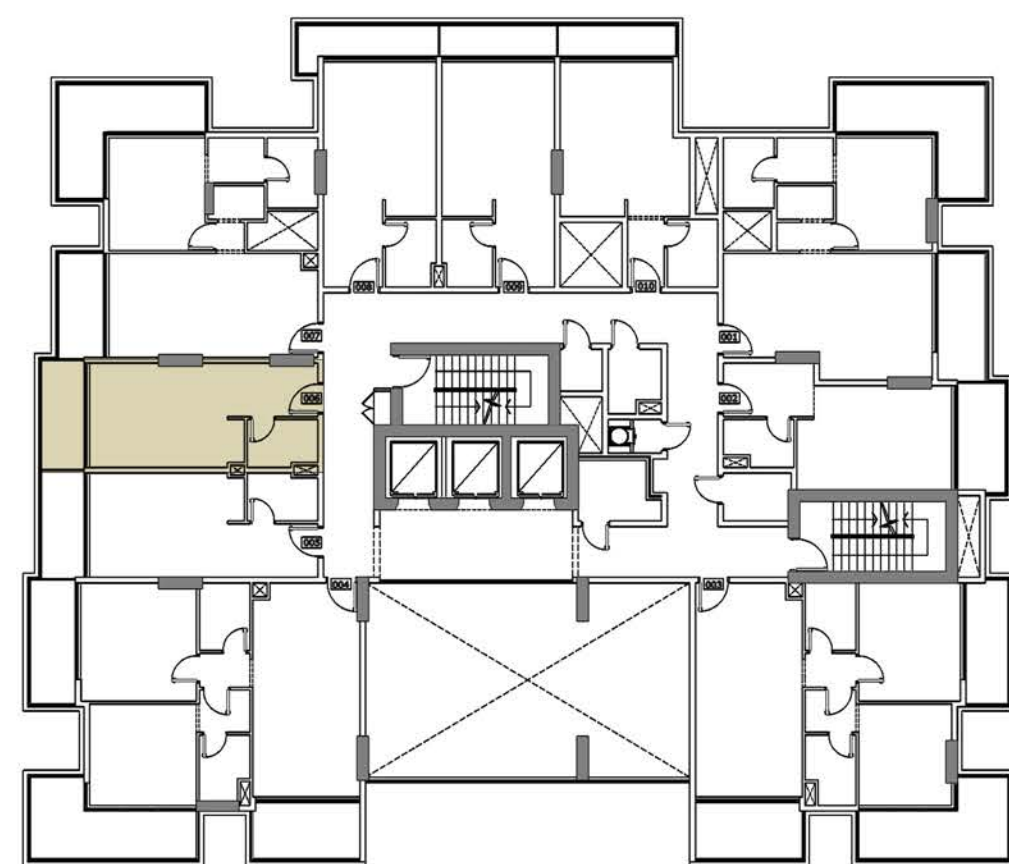
1st FLOOR STUDIO APARTMENT



UNIT AREA	345 Sq. ft.
TERR/BAL AREA	68 Sq. ft.
TOTAL AREA	413 Sq. ft.
UNITS	105

Disclaimer: all pictures, plans, layouts, information, data and details included in this brochure are indicative only and may change at any time up to the final 'as built' status in accordance with the final designs of the project, regulatory approvals and planning permissions.

ARLINGTON PARK



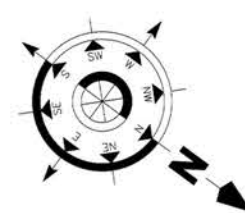
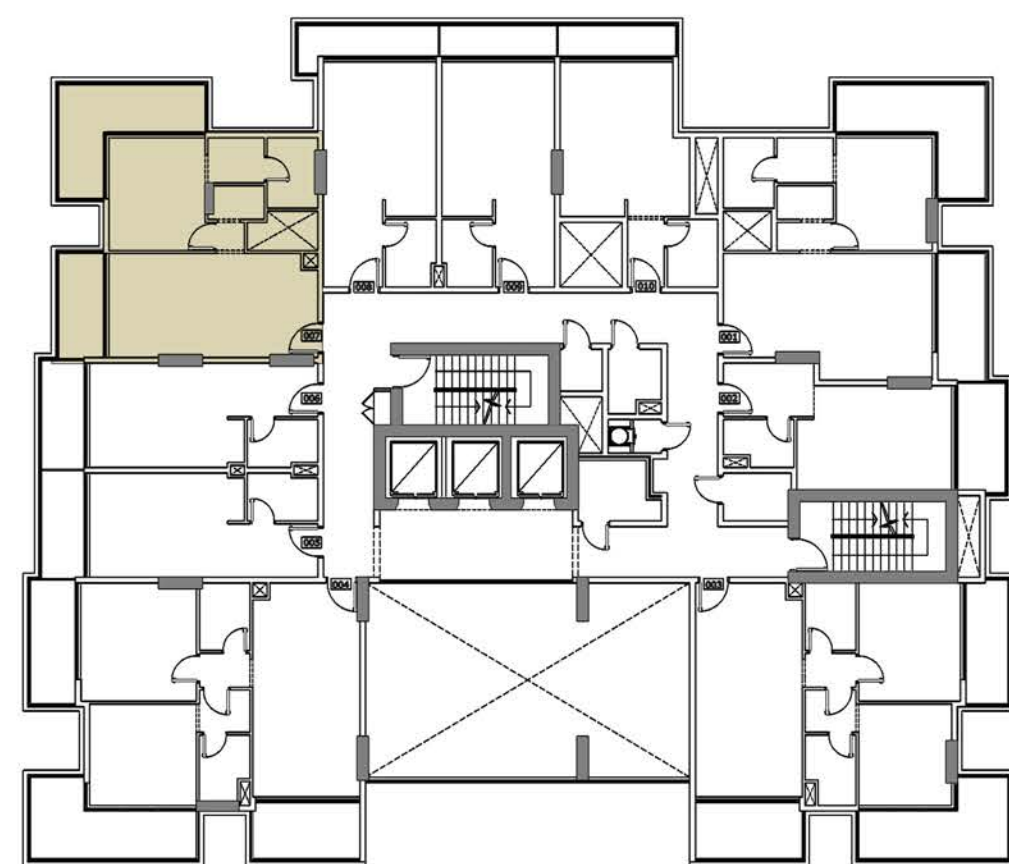
1st FLOOR STUDIO APARTMENT



UNIT AREA	345 Sq. ft.
TERR/BAL AREA	68 Sq. ft.
TOTAL AREA	413 Sq. ft.
UNITS	106

Disclaimer: all pictures, plans, layouts, information, data and details included in this brochure are indicative only and may change at any time up to the final 'as built' status in accordance with the final designs of the project, regulatory approvals and planning permissions.

ARLINGTON PARK



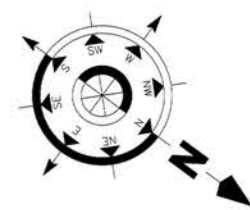
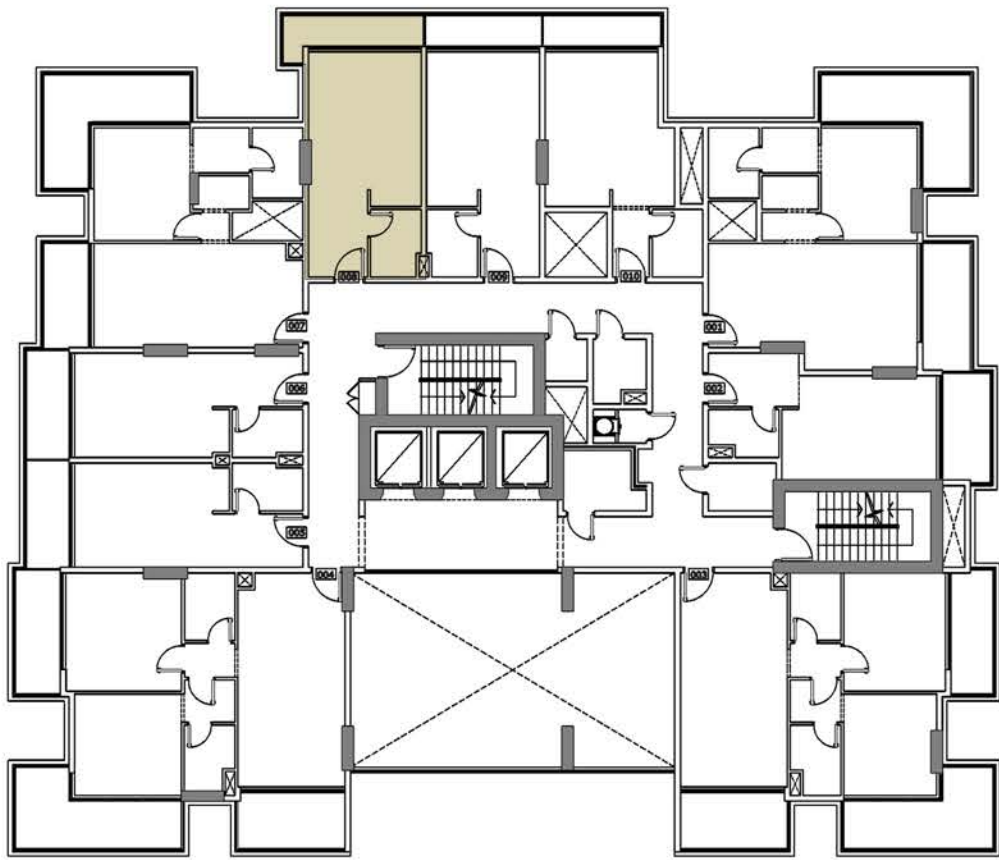
1st FLOOR 1 BEDROOM APARTMENT

UNIT AREA	610 Sq. ft.
TERR/BAL AREA	216 Sq. ft.
TOTAL AREA	826 Sq. ft.
UNITS	107

Disclaimer: all pictures, plans, layouts, information, data and details included in this brochure are indicative only and may change at any time up to the final 'as built' status in accordance with the final designs of the project, regulatory approvals and planning permissions.



ARLINGTON PARK



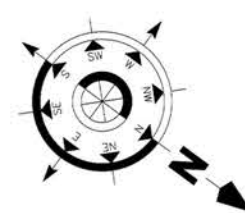
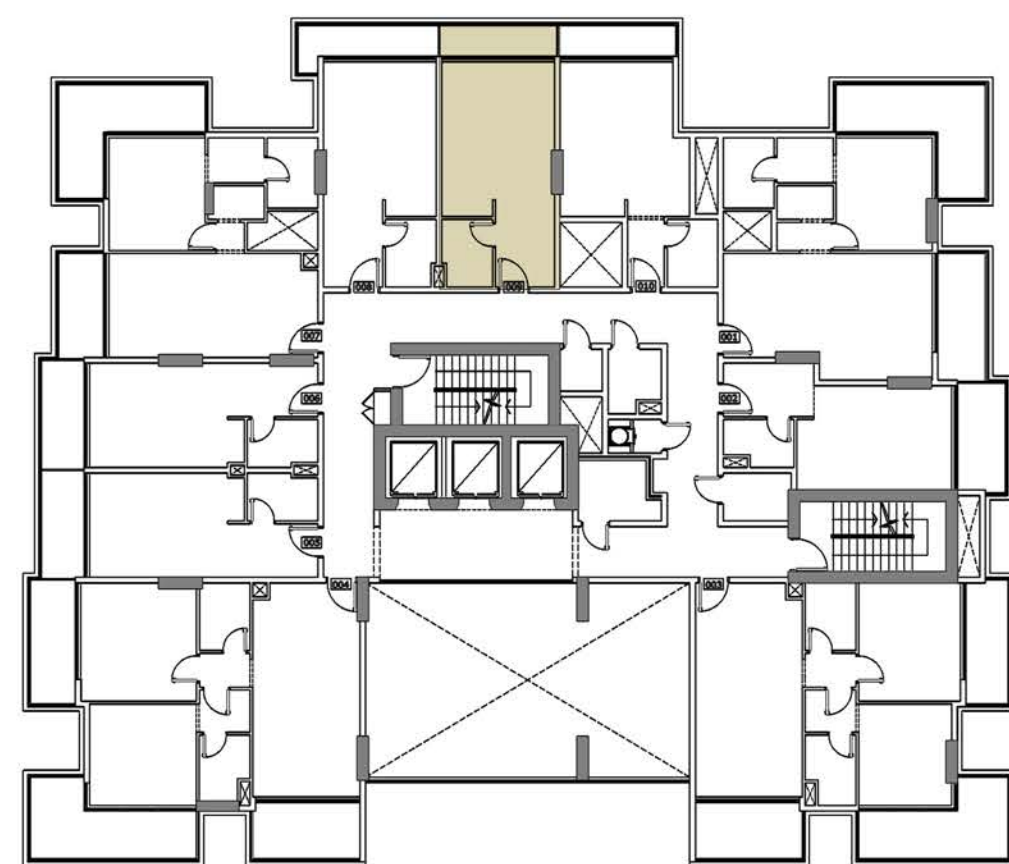
1st FLOOR STUDIO APARTMENT

UNIT AREA	369 Sq. ft.
TERR/BAL AREA	71 Sq. ft.
TOTAL AREA	440 Sq. ft.
UNITS	108

Disclaimer: all pictures, plans, layouts, information, data and details included in this brochure are indicative only and may change at any time up to the final 'as built' status in accordance with the final designs of the project, regulatory approvals and planning permissions.



ARLINGTON PARK



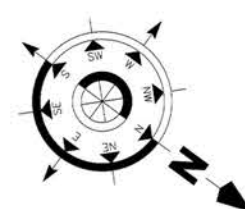
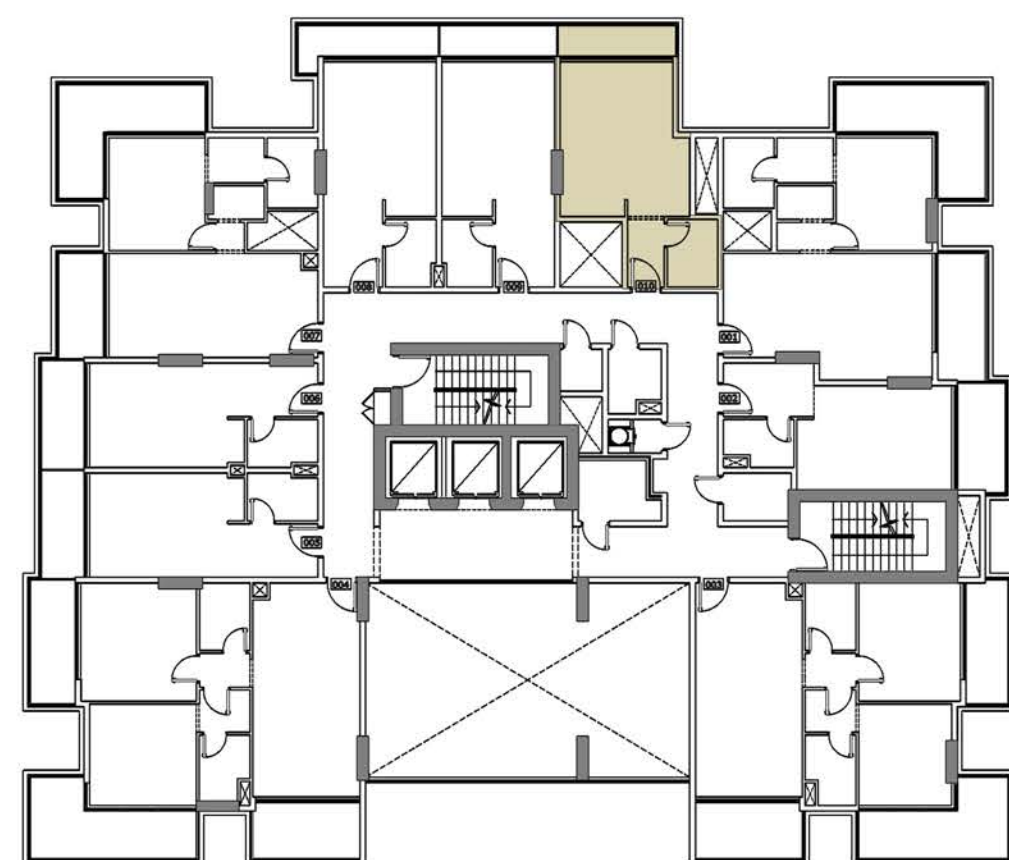
1st FLOOR STUDIO APARTMENT

UNIT AREA	369 Sq. ft.
TERR/BAL AREA	55 Sq. ft.
TOTAL AREA	424 Sq. ft.
UNITS	109

Disclaimer: all pictures, plans, layouts, information, data and details included in this brochure are indicative only and may change at any time up to the final 'as built' status in accordance with the final designs of the project, regulatory approvals and planning permissions.



ARLINGTON PARK



1st FLOOR STUDIO APARTMENT

UNIT AREA	370 Sq. ft.
TERR/BAL AREA	56 Sq. ft.
TOTAL AREA	426 Sq. ft.
UNITS	110

Disclaimer: all pictures, plans, layouts, information, data and details included in this brochure are indicative only and may change at any time up to the final 'as built' status in accordance with the final designs of the project, regulatory approvals and planning permissions.



ARLINGTON PARK

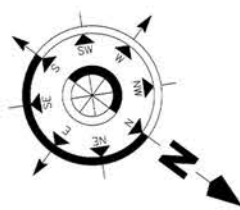
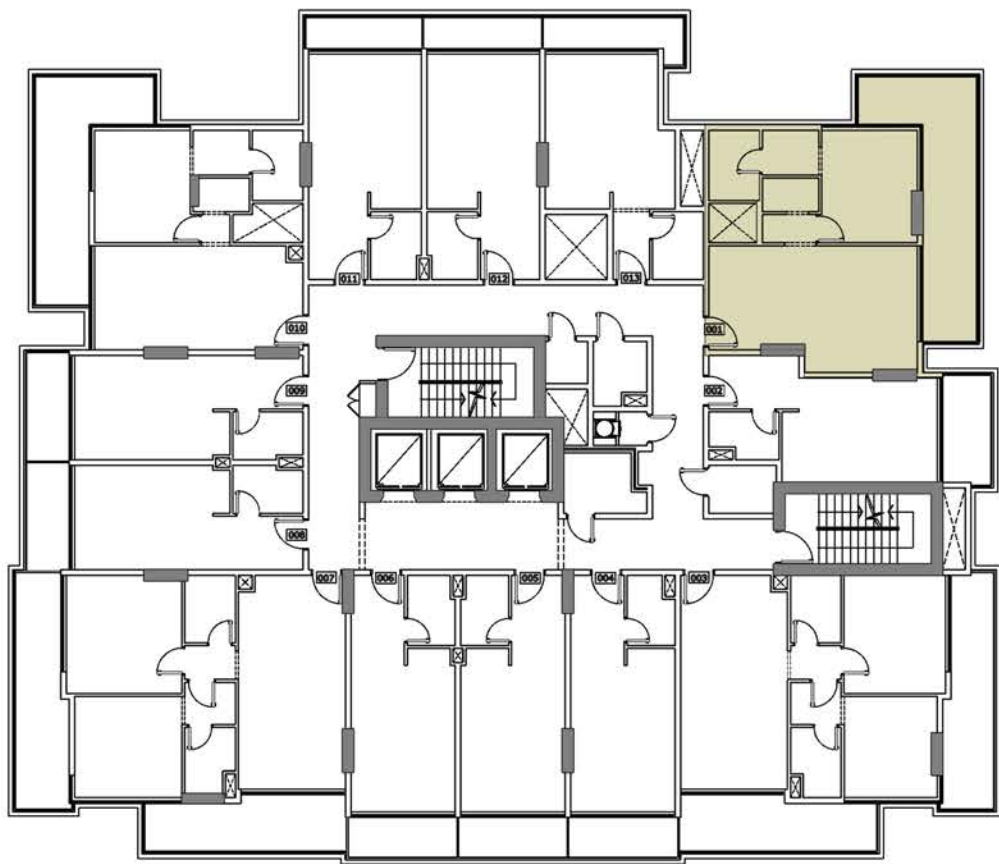
NEIGHBOUR 50.00M



TYPICAL FLOOR PLAN (2,4,6,8 & 10)

Disclaimer: all pictures, plans, layouts, information, data and details included in this brochure are indicative only and may change at any time up to the final 'as built' status in accordance with the final designs of the project, regulatory approvals and planning permissions.

ARLINGTON PARK



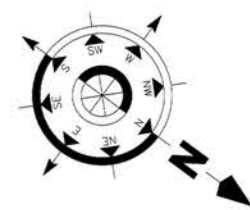
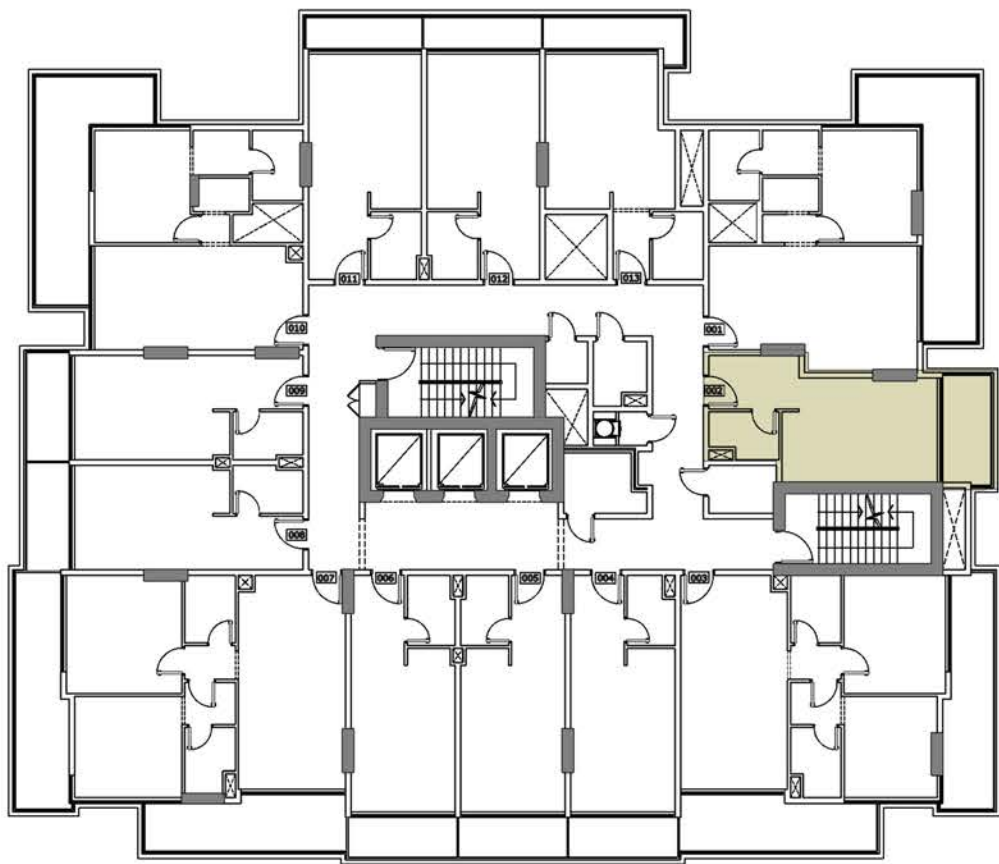
TYPICAL (2,4,6,8 & 10) FLOOR 1 BEDROOM APARTMENTS

UNIT AREA	660 Sq. ft.
TERR/BAL AREA	250 Sq. ft.
TOTAL AREA	910 Sq. ft.
UNITS	201,401,601,801 & 1001

Disclaimer: all pictures, plans, layouts, information, data and details included in this brochure are indicative only and may change at any time up to the final 'as built' status in accordance with the final designs of the project, regulatory approvals and planning permissions.



ARLINGTON PARK



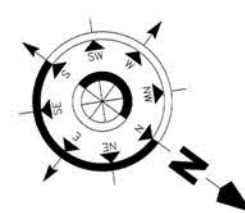
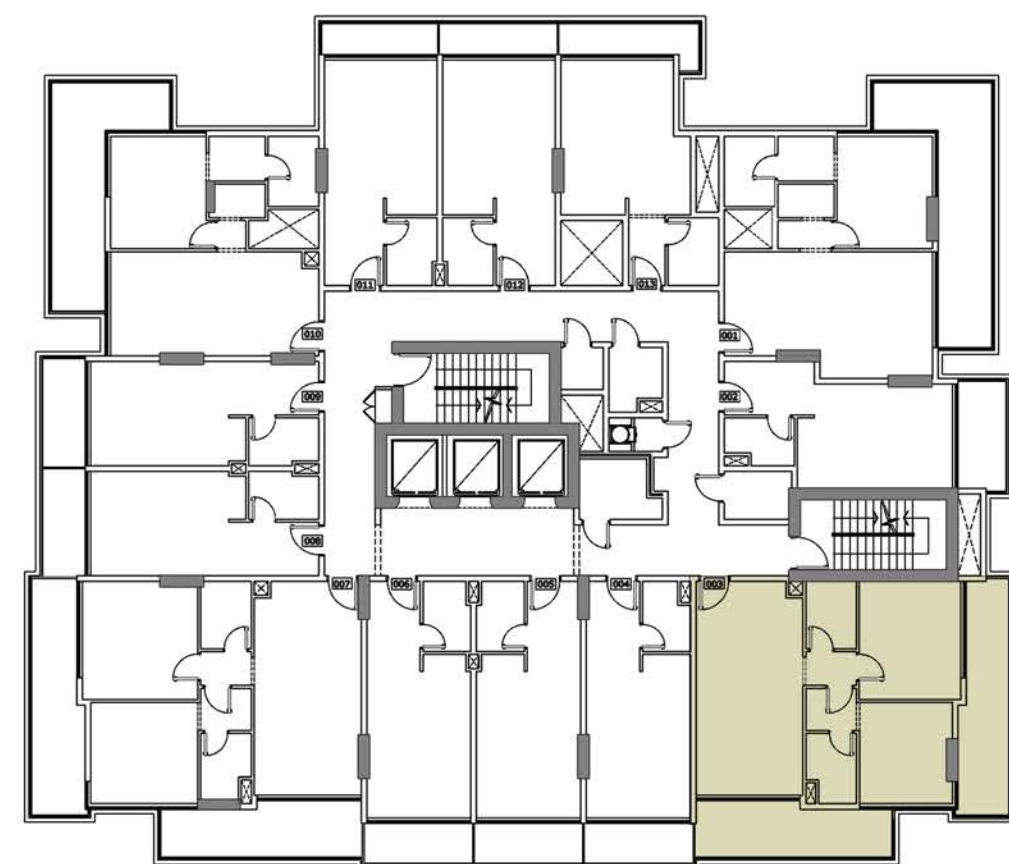
TYPICAL (2,4,6,8 & 10) FLOOR STUDIO APARTMENTS

UNIT AREA	356 Sq. ft.
TERR/BAL AREA	77 Sq. ft.
TOTAL AREA	433 Sq. ft.
UNITS	202,402,602,802 & 1002

Disclaimer: all pictures, plans, layouts, information, data and details included in this brochure are indicative only and may change at any time up to the final 'as built' status in accordance with the final designs of the project, regulatory approvals and planning permissions.



ARLINGTON PARK



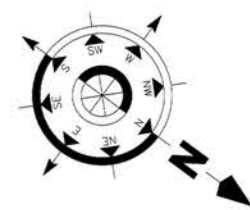
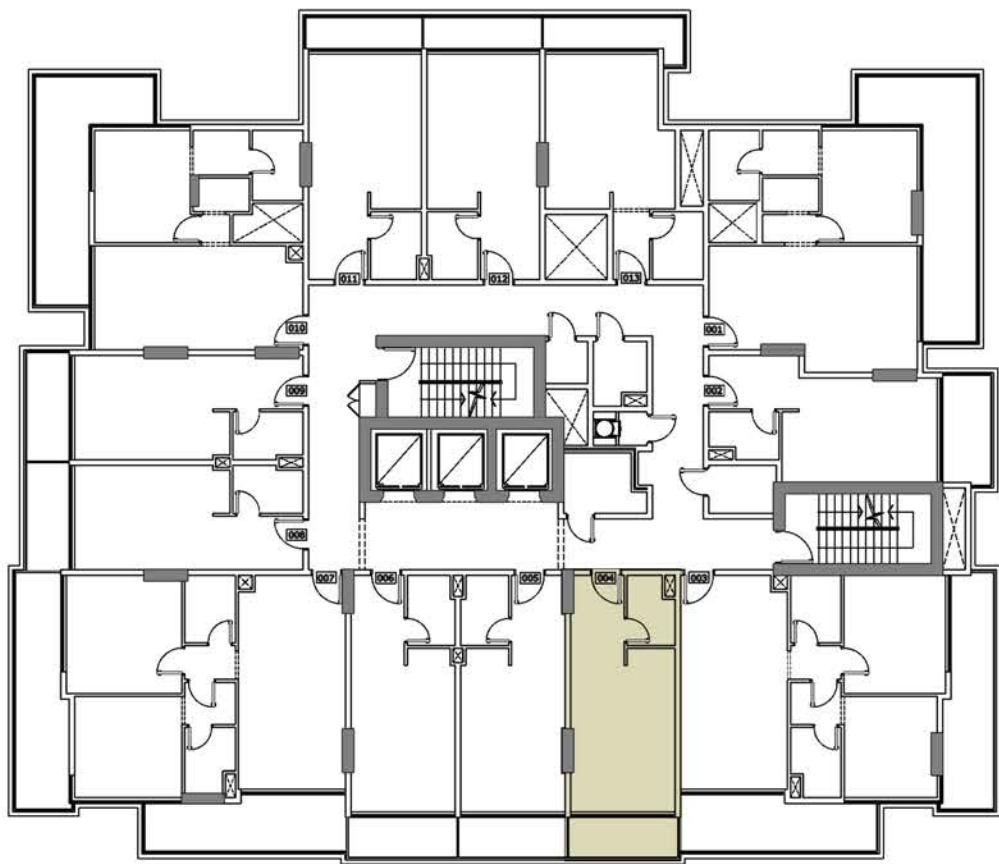
TYPICAL (2,4,6,8 & 10) FLOOR 2 BEDROOM APARTMENTS

UNIT AREA	809 Sq. ft.
TERR/BAL AREA	312 Sq. ft.
TOTAL AREA	1121 Sq. ft.
UNITS	203,403,603,803 & 1003

Disclaimer: all pictures, plans, layouts, information, data and details included in this brochure are indicative only and may change at any time up to the final 'as built' status in accordance with the final designs of the project, regulatory approvals and planning permissions.



ARLINGTON PARK



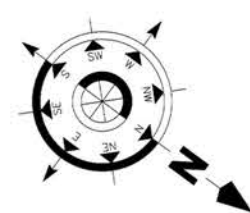
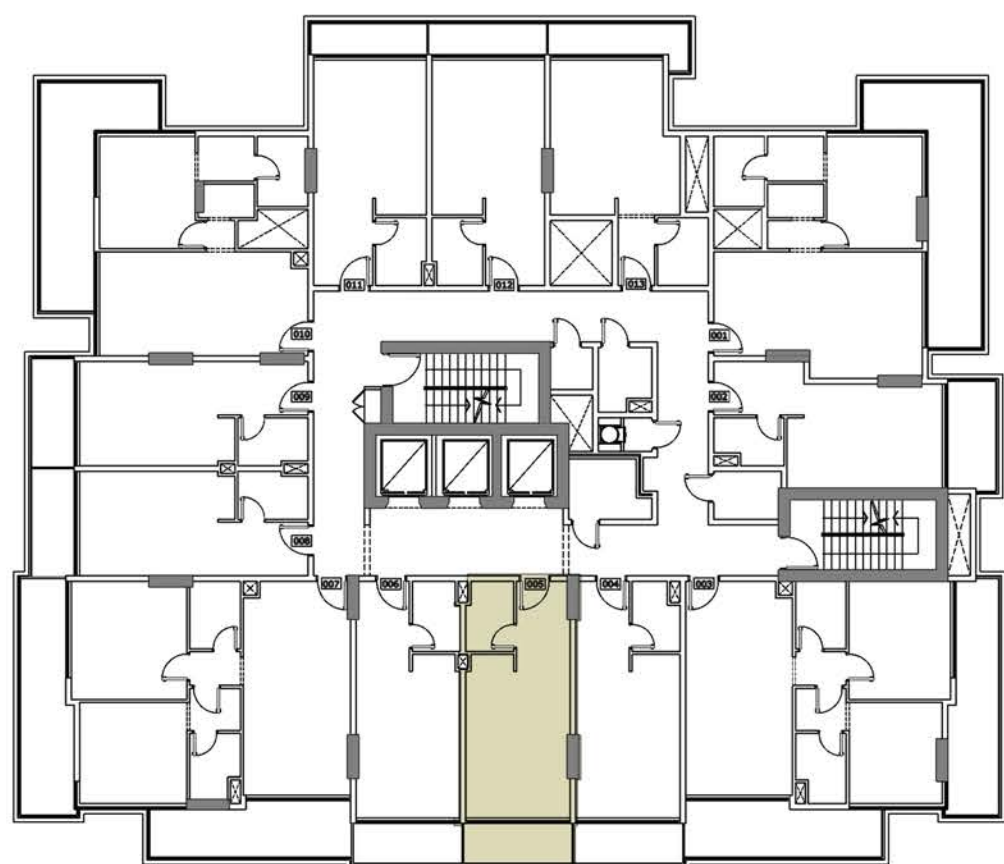
TYPICAL (2,4,6,8 & 10) FLOOR STUDIO APARTMENTS

UNIT AREA	356 Sq. ft.
TERR/BAL AREA	64 Sq. ft.
TOTAL AREA	420 Sq. ft.
UNITS	204,404,604,804 & 1004

Disclaimer: all pictures, plans, layouts, information, data and details included in this brochure are indicative only and may change at any time up to the final 'as built' status in accordance with the final designs of the project, regulatory approvals and planning permissions.



ARLINGTON PARK



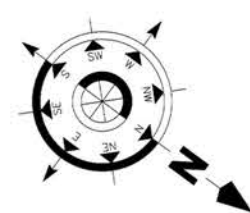
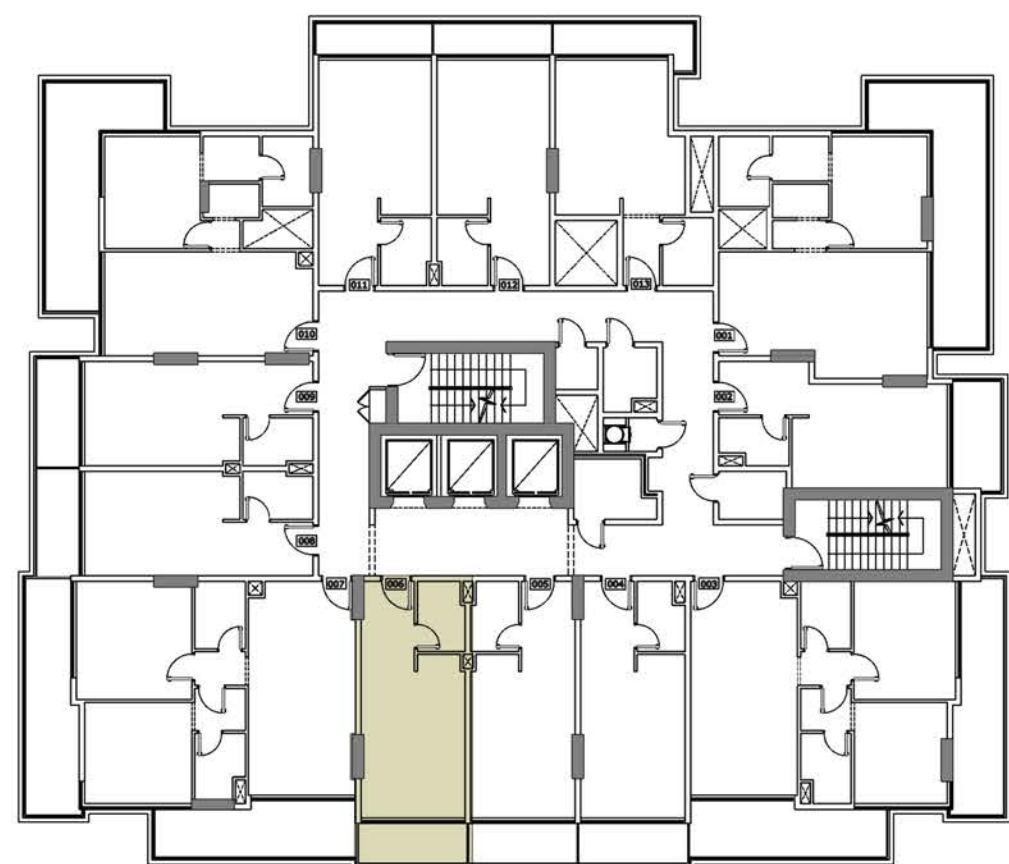
TYPICAL (2,4,6,8 & 10) FLOOR STUDIO APARTMENTS

UNIT AREA	357 Sq. ft.
TERR/BAL AREA	64 Sq. ft.
TOTAL AREA	421 Sq. ft.
UNITS	205,405,605,805 & 1005

Disclaimer: all pictures, plans, layouts, information, data and details included in this brochure are indicative only and may change at any time up to the final 'as built' status in accordance with the final designs of the project, regulatory approvals and planning permissions.



ARLINGTON PARK



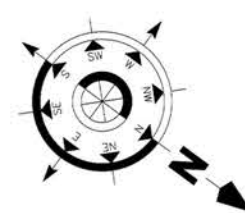
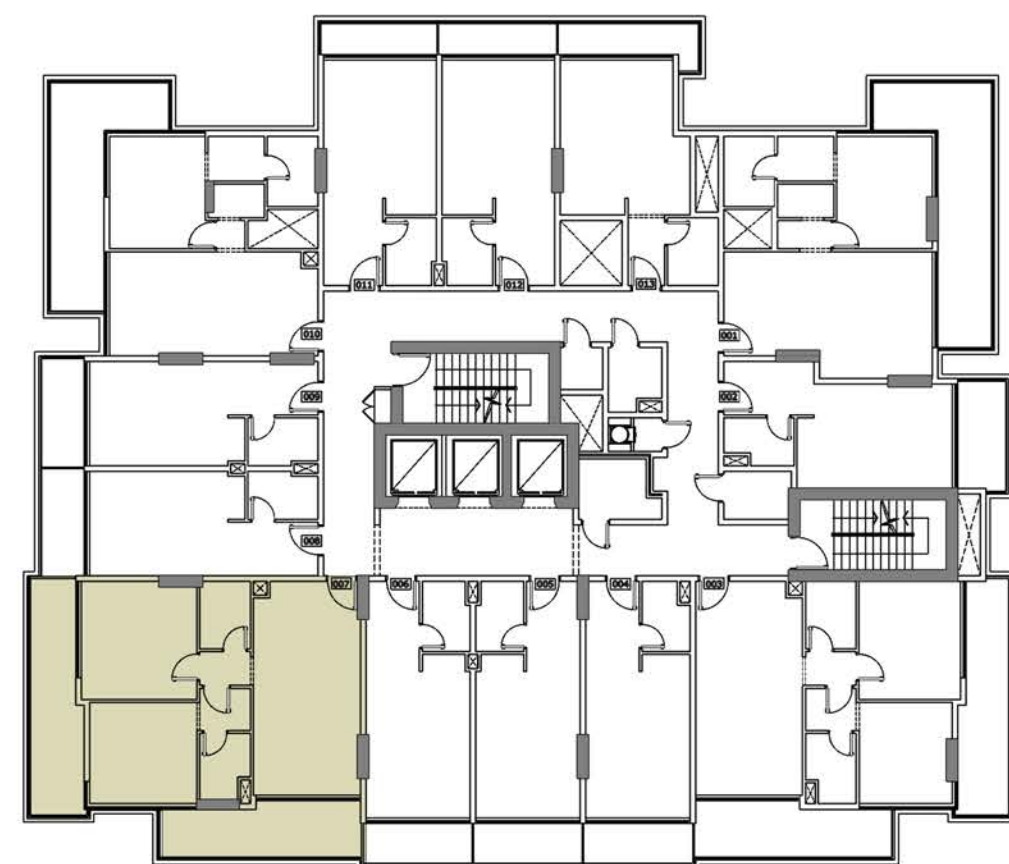
TYPICAL (2,4,6,8 & 10) FLOOR STUDIO APARTMENTS

UNIT AREA	357 Sq. ft.
TERR/BAL AREA	64 Sq. ft.
TOTAL AREA	421 Sq. ft.
UNITS	206,406,606,806 & 1006

Disclaimer: all pictures, plans, layouts, information, data and details included in this brochure are indicative only and may change at any time up to the final 'as built' status in accordance with the final designs of the project, regulatory approvals and planning permissions.



ARLINGTON PARK



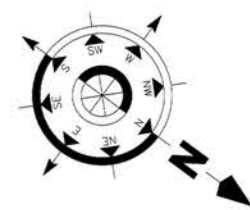
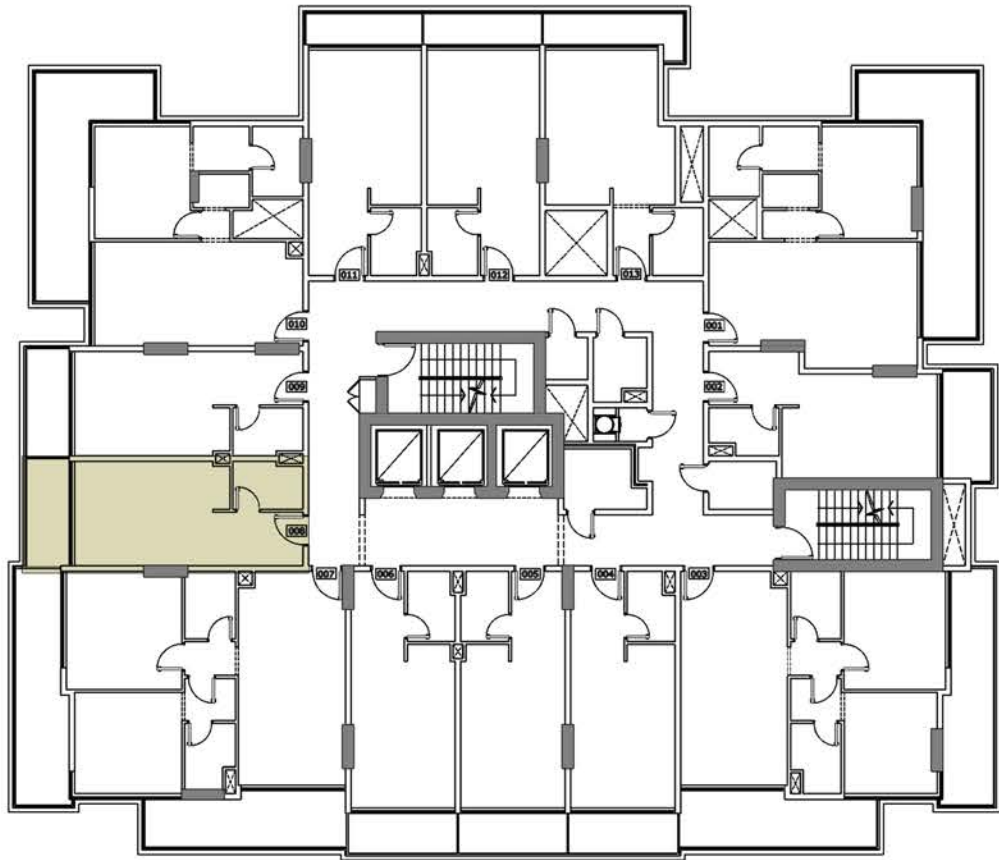
TYPICAL (2,4,6,8 & 10) FLOOR 2 BEDROOM APARTMENTS

UNIT AREA	847 Sq. ft.
TERR/BAL AREA	325 Sq. ft.
TOTAL AREA	1172 Sq. ft.
UNITS	207,407,607,807 & 1007

Disclaimer: all pictures, plans, layouts, information, data and details included in this brochure are indicative only and may change at any time up to the final 'as built' status in accordance with the final designs of the project, regulatory approvals and planning permissions.



ARLINGTON PARK



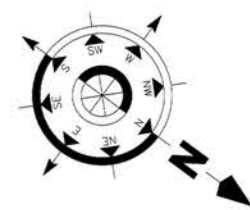
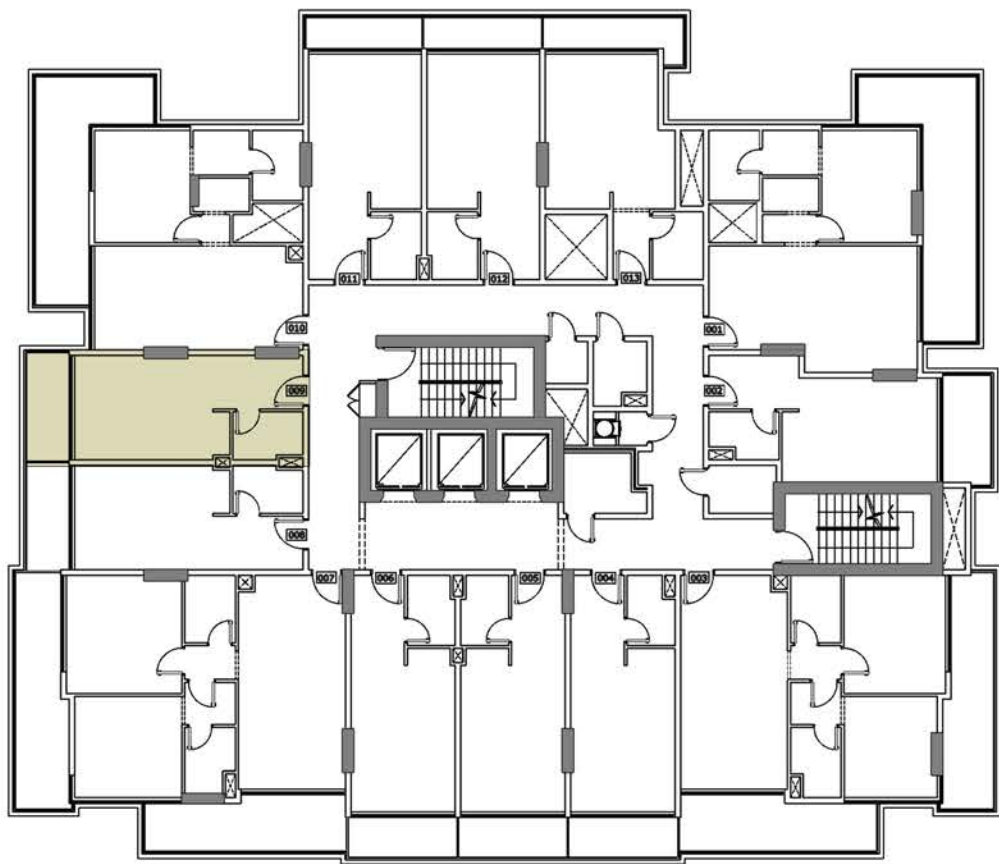
TYPICAL (2,4,6,8 & 10) FLOOR STUDIO APARTMENTS



UNIT AREA	345 Sq. ft.
TERR/BAL AREA	68 Sq. ft.
TOTAL AREA	413 Sq. ft.
UNITS	208,408,608,808 & 1008

Disclaimer: all pictures, plans, layouts, information, data and details included in this brochure are indicative only and may change at any time up to the final 'as built' status in accordance with the final designs of the project, regulatory approvals and planning permissions.

ARLINGTON PARK



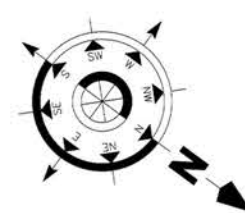
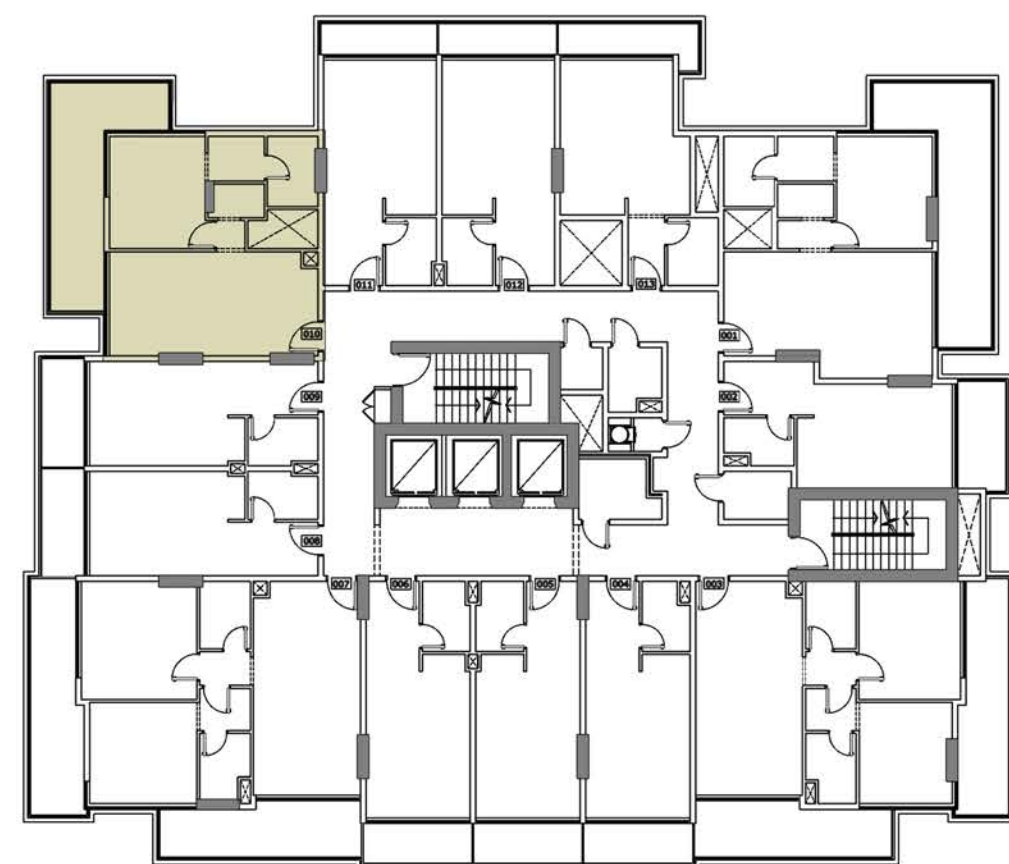
TYPICAL (2,4,6,8 & 10) FLOOR STUDIO APARTMENTS

UNIT AREA	345 Sq. ft.
TERR/BAL AREA	68 Sq. ft.
TOTAL AREA	413 Sq. ft.
UNITS	209,409,609,809 & 1009

Disclaimer: all pictures, plans, layouts, information, data and details included in this brochure are indicative only and may change at any time up to the final 'as built' status in accordance with the final designs of the project, regulatory approvals and planning permissions.



ARLINGTON PARK



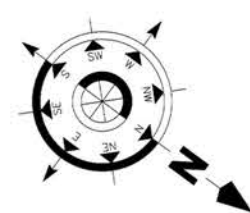
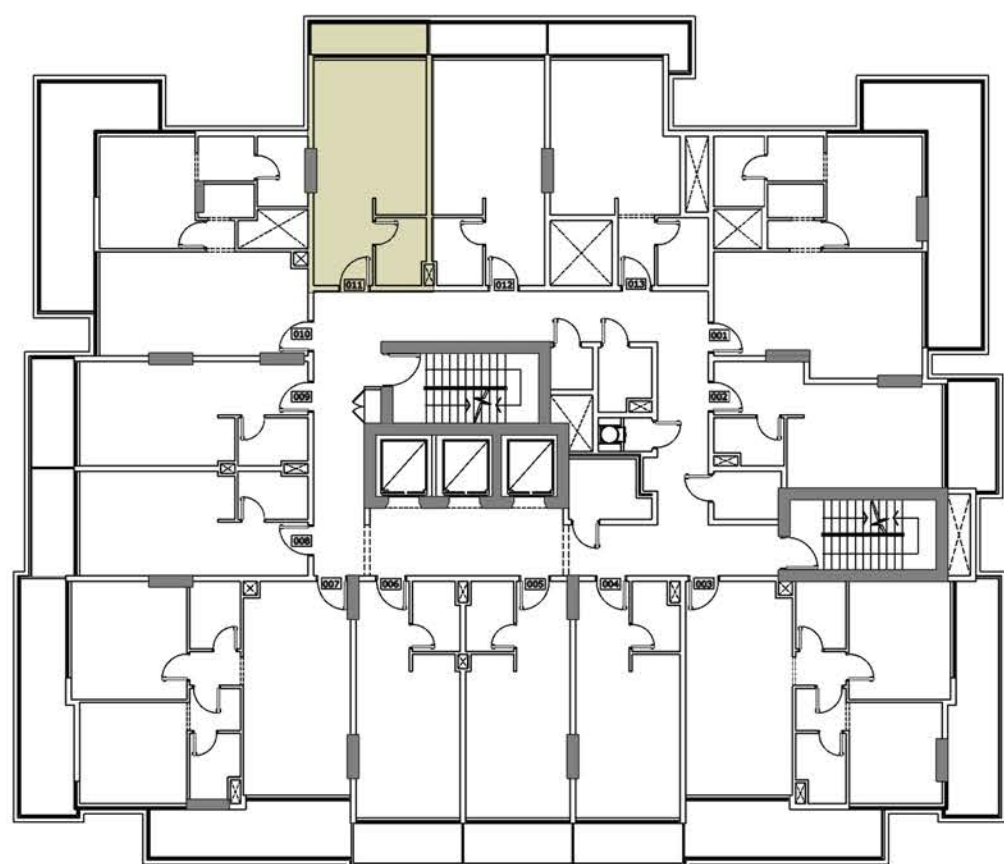
TYPICAL (2,4,6,8 & 10) FLOOR 1 BEDROOM APARTMENTS

UNIT AREA	610 Sq. ft.
TERR/BAL AREA	221 Sq. ft.
TOTAL AREA	831 Sq. ft.
UNITS	210,410,610,810 & 1010

Disclaimer: all pictures, plans, layouts, information, data and details included in this brochure are indicative only and may change at any time up to the final 'as built' status in accordance with the final designs of the project, regulatory approvals and planning permissions.



ARLINGTON PARK



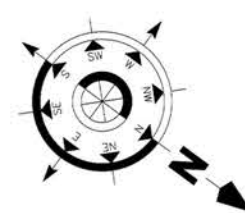
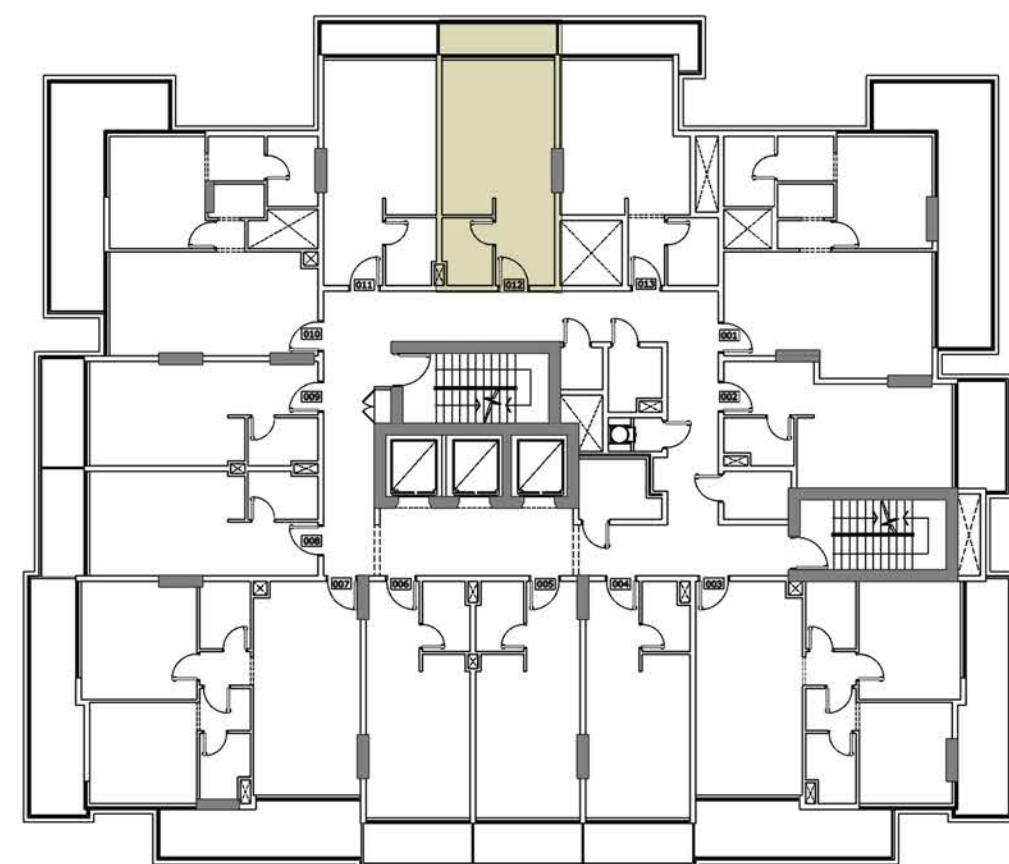
TYPICAL (2,4,6,8 & 10) FLOOR STUDIO APARTMENTS

UNIT AREA	369 Sq. ft.
TERR/BAL AREA	55 Sq. ft.
TOTAL AREA	424 Sq. ft.
UNITS	211,411,611,811 & 1011

Disclaimer: all pictures, plans, layouts, information, data and details included in this brochure are indicative only and may change at any time up to the final 'as built' status in accordance with the final designs of the project, regulatory approvals and planning permissions.



ARLINGTON PARK



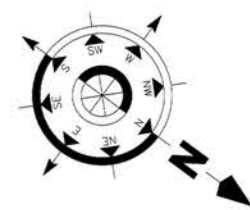
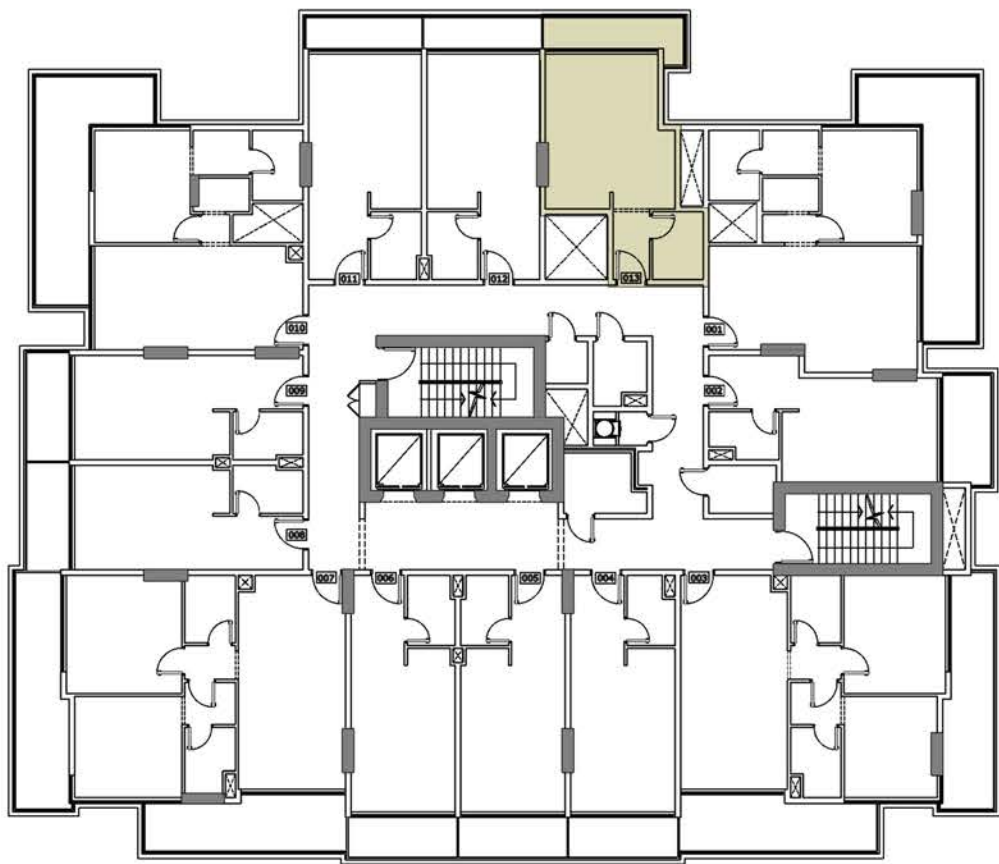
TYPICAL (2,4,6,8 & 10) FLOOR STUDIO APARTMENTS

UNIT AREA	369 Sq. ft.
TERR/BAL AREA	56 Sq. ft.
TOTAL AREA	425 Sq. ft.
UNITS	212,412,612,812 & 1012

Disclaimer: all pictures, plans, layouts, information, data and details included in this brochure are indicative only and may change at any time up to the final 'as built' status in accordance with the final designs of the project, regulatory approvals and planning permissions.



ARLINGTON PARK



TYPICAL (2,4,6,8 & 10) FLOOR STUDIO APARTMENTS

UNIT AREA	370 Sq. ft.
TERR/BAL AREA	71 Sq. ft.
TOTAL AREA	441 Sq. ft.
UNITS	213,413,613,813 & 1013

Disclaimer: all pictures, plans, layouts, information, data and details included in this brochure are indicative only and may change at any time up to the final 'as built' status in accordance with the final designs of the project, regulatory approvals and planning permissions.



ARLINGTON PARK

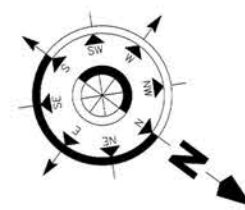
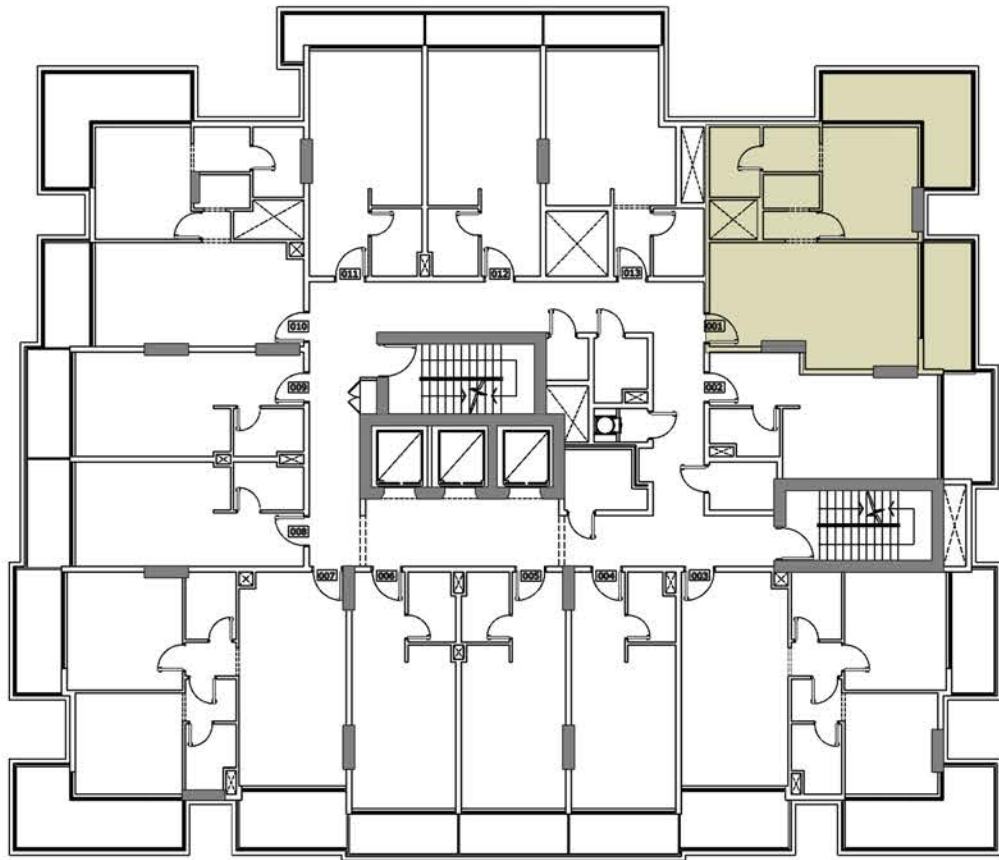
NEIGHBOUR 50.00M



TYPICAL FLOOR PLAN (3,5,7,9 & 11)

Disclaimer: all pictures, plans, layouts, information, data and details included in this brochure are indicative only and may change at any time up to the final 'as built' status in accordance with the final designs of the project, regulatory approvals and planning permissions.

ARLINGTON PARK



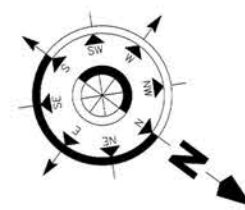
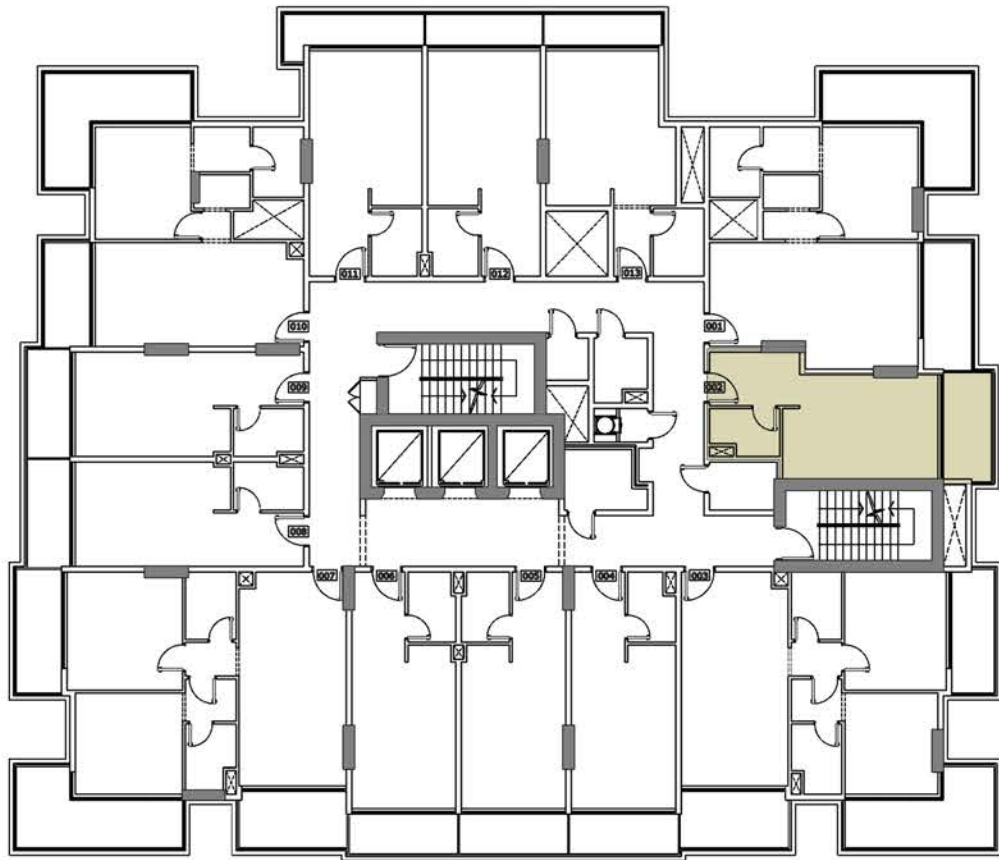
TYPICAL (3,5,7,9 & 11) FLOOR 1 BEDROOM APARTMENTS

UNIT AREA	660 Sq. ft.
TERR/BAL AREA	241 Sq. ft.
TOTAL AREA	901 Sq. ft.
UNITS	301,501,701,901 & 1101

Disclaimer: all pictures, plans, layouts, information, data and details included in this brochure are indicative only and may change at any time up to the final 'as built' status in accordance with the final designs of the project, regulatory approvals and planning permissions.



ARLINGTON PARK



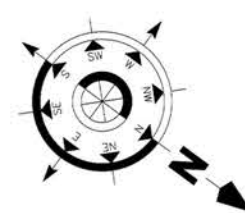
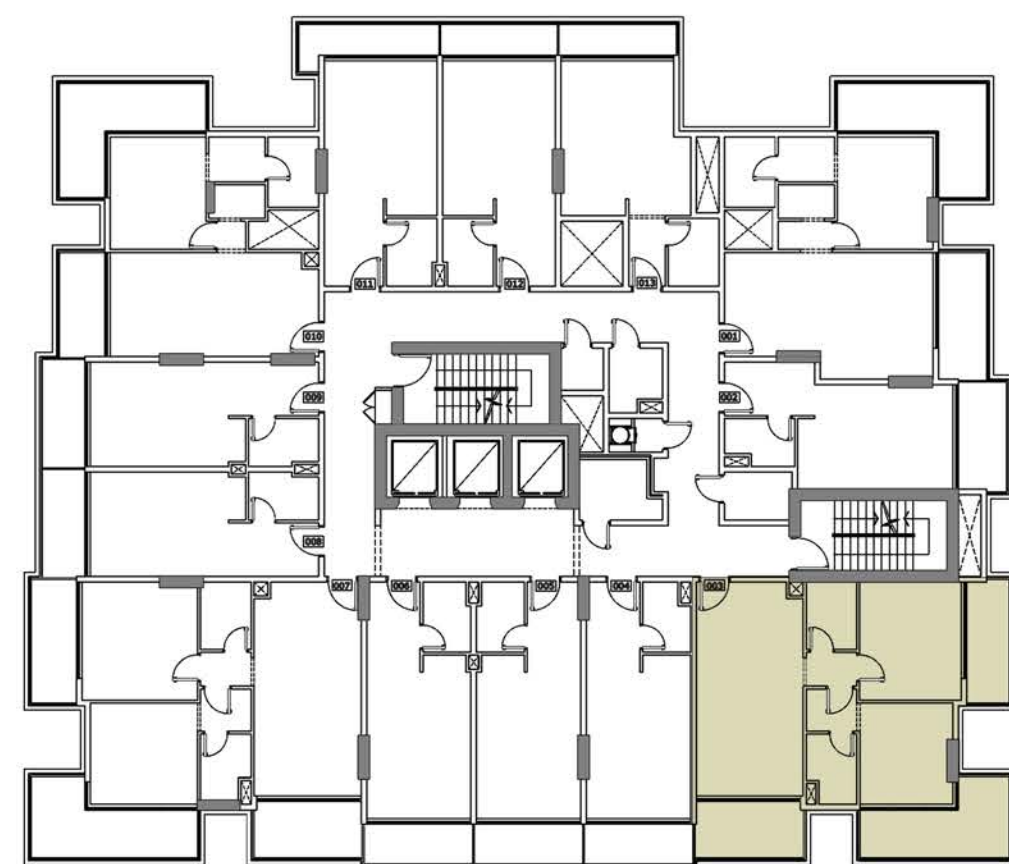
TYPICAL (3,5,7,9 & 11) FLOOR STUDIO APARTMENTS

UNIT AREA	356 Sq. ft.
TERR/BAL AREA	77 Sq. ft.
TOTAL AREA	433 Sq. ft.
UNITS	302,502,702,902 & 1102

Disclaimer: all pictures, plans, layouts, information, data and details included in this brochure are indicative only and may change at any time up to the final 'as built' status in accordance with the final designs of the project, regulatory approvals and planning permissions.



ARLINGTON PARK



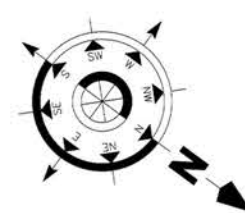
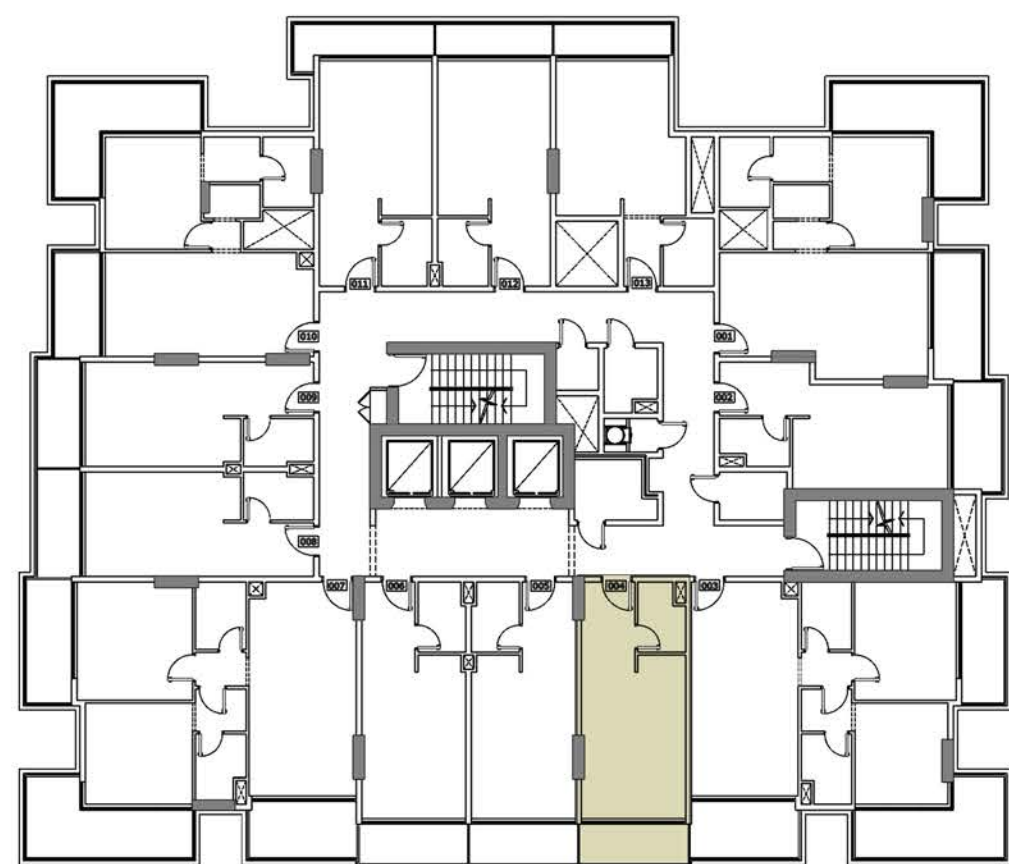
TYPICAL (3,5,7,9 & 11) FLOOR 2 BEDROOM APARTMENTS

UNIT AREA	809 Sq. ft.
TERR/BAL AREA	295 Sq. ft.
TOTAL AREA	1104 Sq. ft.
UNITS	303,503,703,903 & 1103

Disclaimer: all pictures, plans, layouts, information, data and details included in this brochure are indicative only and may change at any time up to the final 'as built' status in accordance with the final designs of the project, regulatory approvals and planning permissions.



ARLINGTON PARK



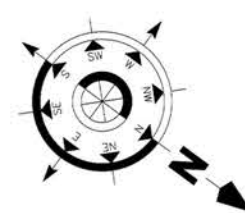
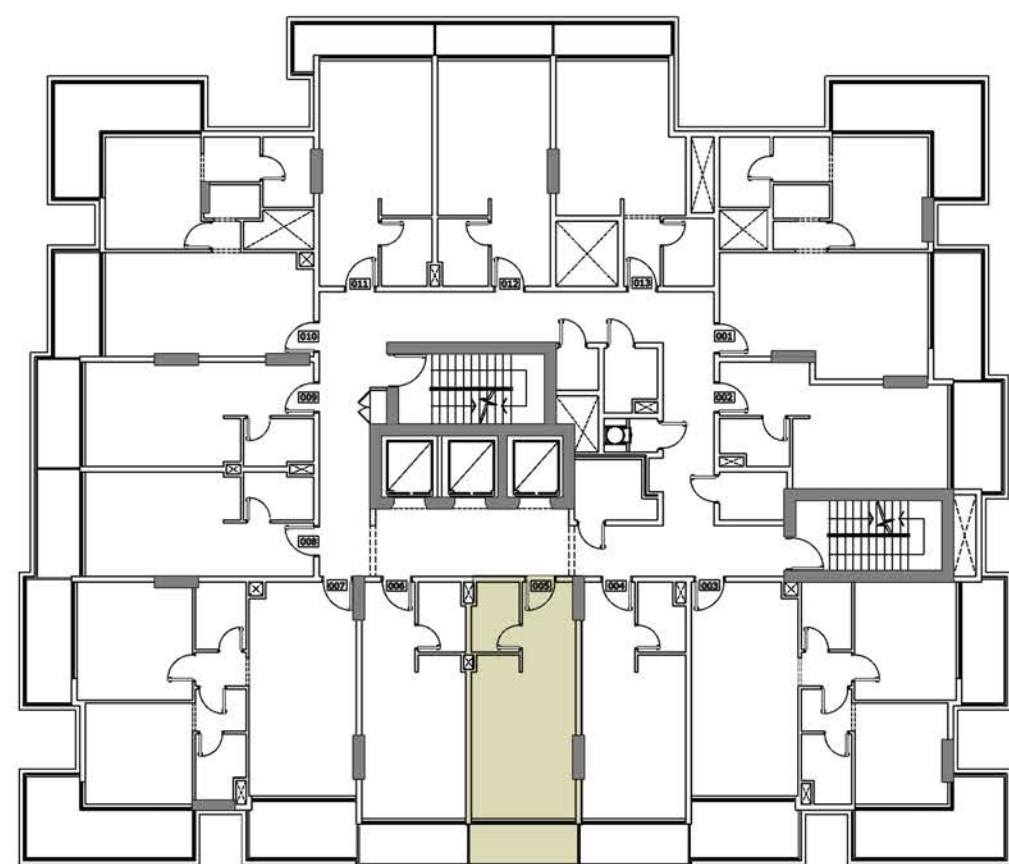
TYPICAL (3,5,7,9 & 11) FLOOR STUDIO APARTMENTS

UNIT AREA	356 Sq. ft.
TERR/BAL AREA	64 Sq. ft.
TOTAL AREA	420 Sq. ft.
UNITS	304,504,704,904 & 1104

Disclaimer: all pictures, plans, layouts, information, data and details included in this brochure are indicative only and may change at any time up to the final 'as built' status in accordance with the final designs of the project, regulatory approvals and planning permissions.



ARLINGTON PARK



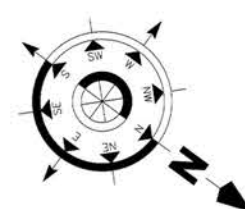
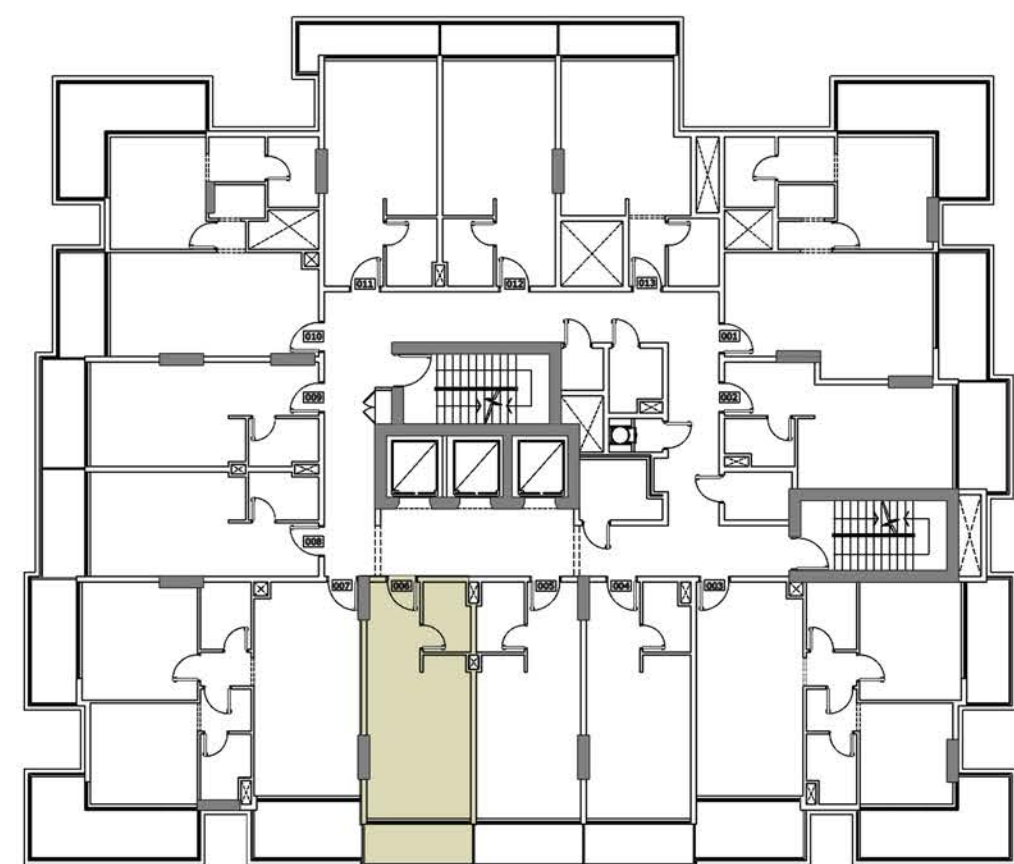
TYPICAL (3,5,7,9 & 11) FLOOR STUDIO APARTMENTS

UNIT AREA	357 Sq. ft.
TERR/BAL AREA	64 Sq. ft.
TOTAL AREA	421 Sq. ft.
UNITS	305,505,705,905 & 1105

Disclaimer: all pictures, plans, layouts, information, data and details included in this brochure are indicative only and may change at any time up to the final 'as built' status in accordance with the final designs of the project, regulatory approvals and planning permissions.



ARLINGTON PARK



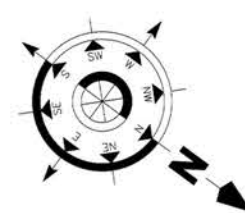
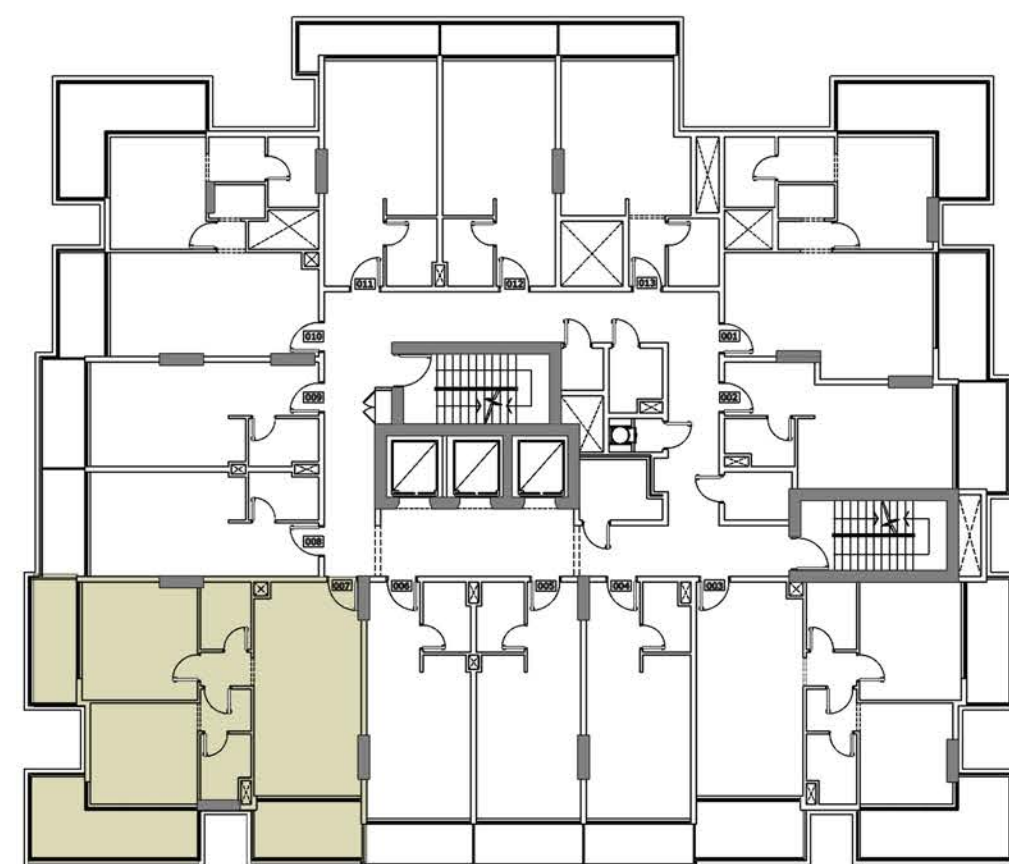
TYPICAL (3,5,7,9 & 11) FLOOR STUDIO APARTMENTS

UNIT AREA	357 Sq. ft.
TERR/BAL AREA	64 Sq. ft.
TOTAL AREA	421 Sq. ft.
UNITS	306,506,706,906 & 1106

Disclaimer: all pictures, plans, layouts, information, data and details included in this brochure are indicative only and may change at any time up to the final 'as built' status in accordance with the final designs of the project, regulatory approvals and planning permissions.



ARLINGTON PARK



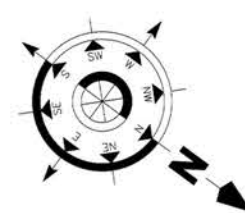
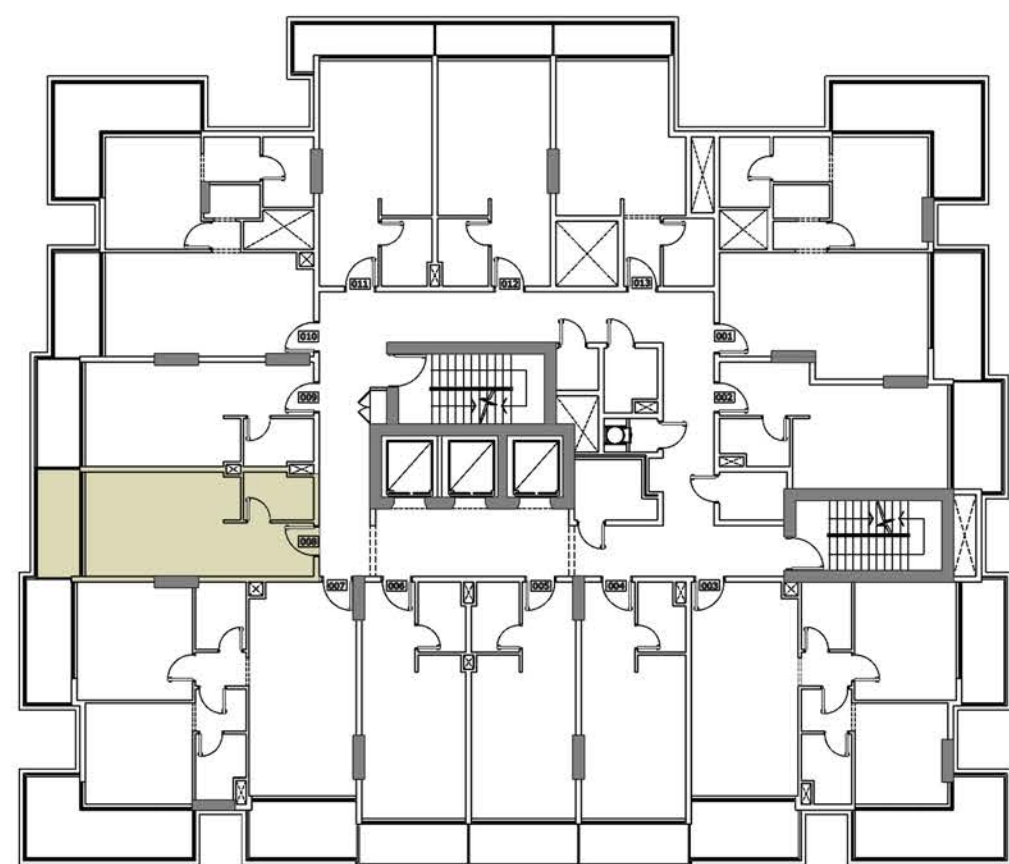
TYPICAL (3,5,7,9 & 11) FLOOR 2 BEDROOM APARTMENTS

UNIT AREA	847 Sq. ft.
TERR/BAL AREA	313 Sq. ft.
TOTAL AREA	1160 Sq. ft.
UNITS	307,507,707,907 & 1107

Disclaimer: all pictures, plans, layouts, information, data and details included in this brochure are indicative only and may change at any time up to the final 'as built' status in accordance with the final designs of the project, regulatory approvals and planning permissions.



ARLINGTON PARK



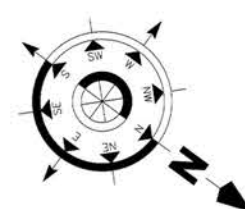
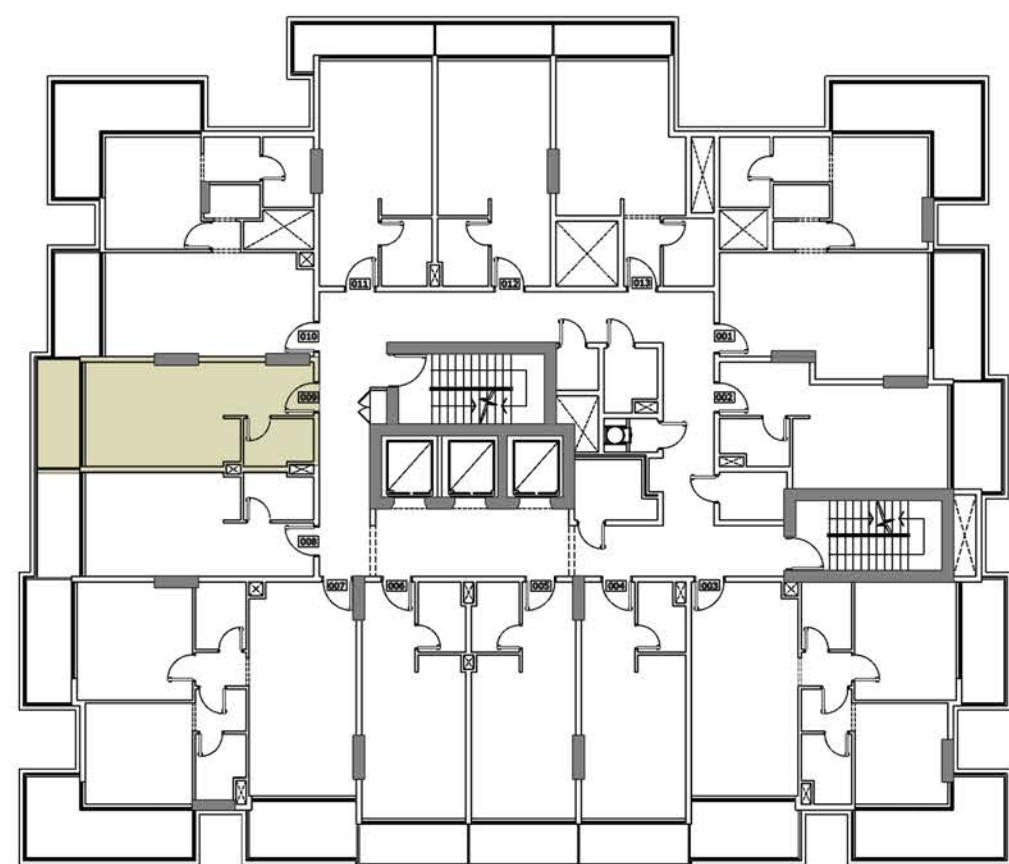
TYPICAL (3,5,7,9 & 11) FLOOR STUDIO APARTMENTS

UNIT AREA	345 Sq. ft.
TERR/BAL AREA	68 Sq. ft.
TOTAL AREA	413 Sq. ft.
UNITS	308,508,708,908 & 1108

Disclaimer: all pictures, plans, layouts, information, data and details included in this brochure are indicative only and may change at any time up to the final 'as built' status in accordance with the final designs of the project, regulatory approvals and planning permissions.



ARLINGTON PARK



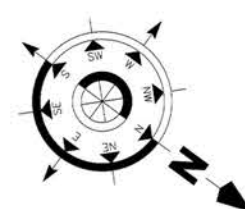
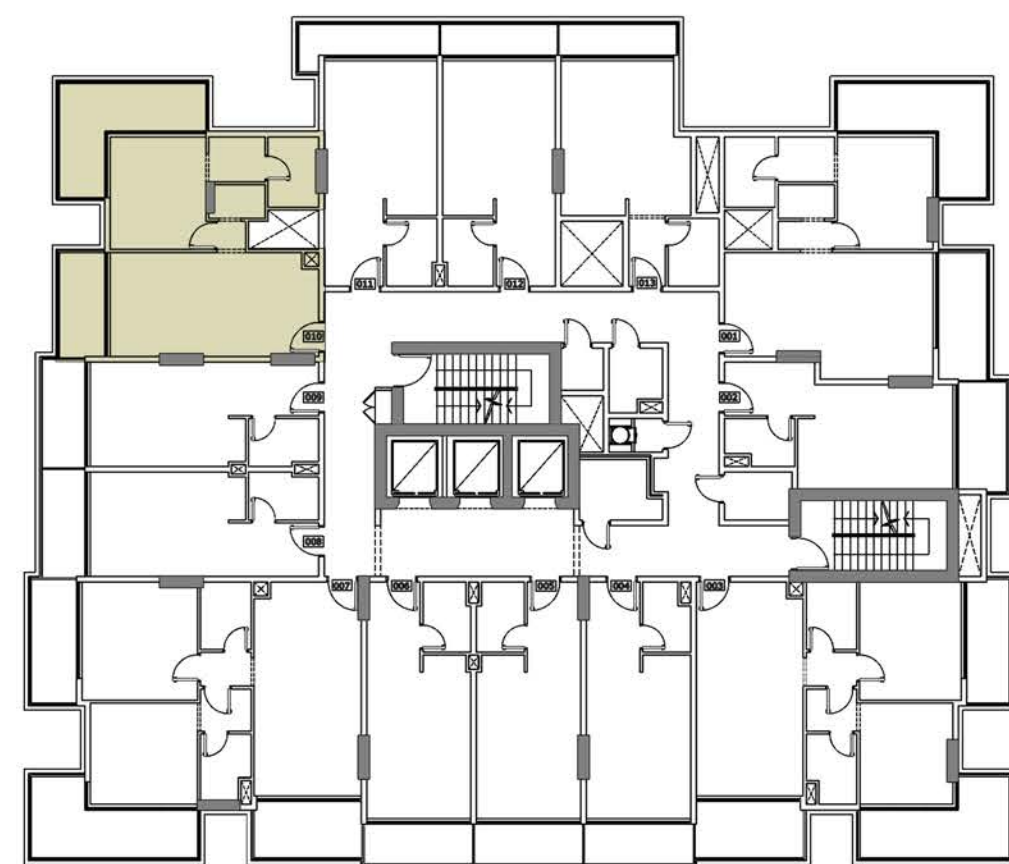
TYPICAL (3,5,7,9 & 11) FLOOR STUDIO APARTMENTS

UNIT AREA	345 Sq. ft.
TERR/BAL AREA	68 Sq. ft.
TOTAL AREA	413 Sq. ft.
UNITS	309,509,709,909 & 1109

Disclaimer: all pictures, plans, layouts, information, data and details included in this brochure are indicative only and may change at any time up to the final 'as built' status in accordance with the final designs of the project, regulatory approvals and planning permissions.



ARLINGTON PARK



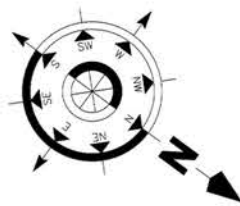
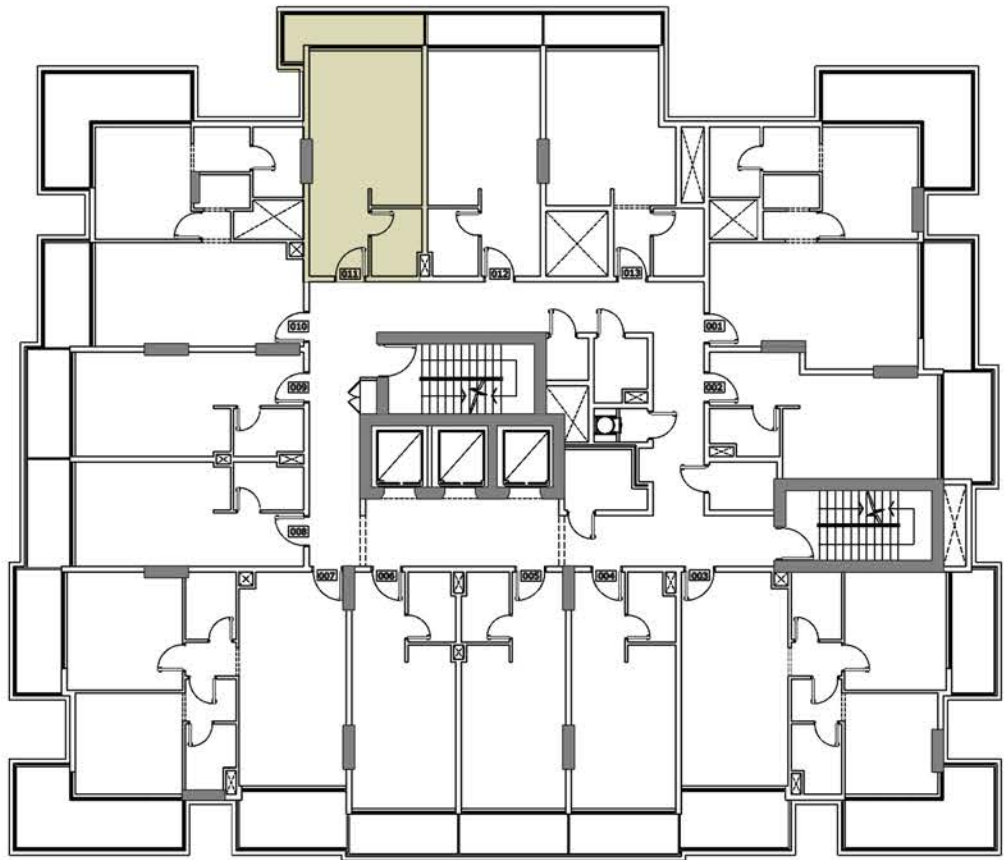
TYPICAL (3,5,7,9 & 11) FLOOR 1 BEDROOM APARTMENTS

UNIT AREA	610 Sq. ft.
TERR/BAL AREA	216 Sq. ft.
TOTAL AREA	826 Sq. ft.
UNITS	310,510,710,910 & 1110

Disclaimer: all pictures, plans, layouts, information, data and details included in this brochure are indicative only and may change at any time up to the final 'as built' status in accordance with the final designs of the project, regulatory approvals and planning permissions.



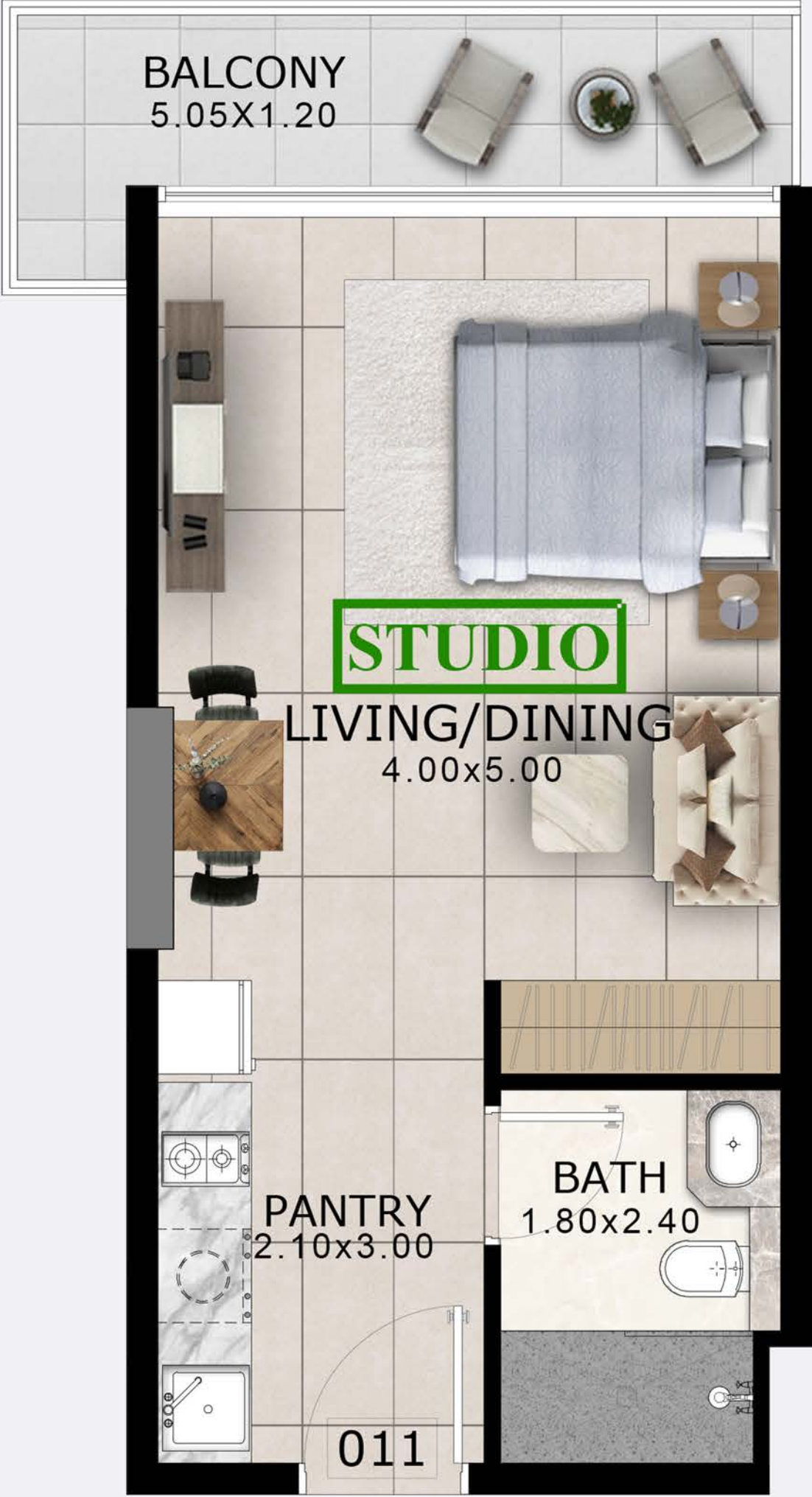
ARLINGTON PARK



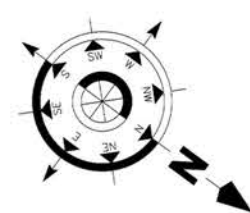
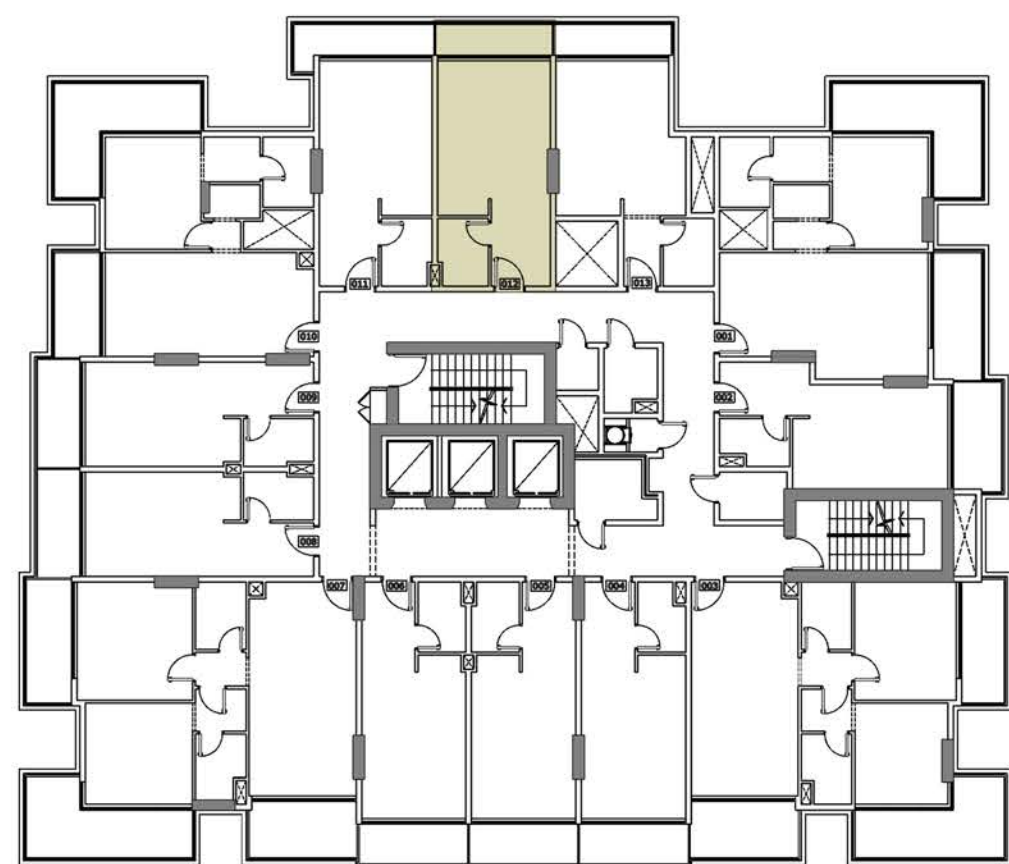
TYPICAL (3,5,7,9 & 11) FLOOR STUDIO APARTMENTS

UNIT AREA	369 Sq. ft.
TERR/BAL AREA	71 Sq. ft.
TOTAL AREA	440 Sq. ft.
UNITS	311,511,711,911 & 1111

Disclaimer: all pictures, plans, layouts, information, data and details included in this brochure are indicative only and may change at any time up to the final 'as built' status in accordance with the final designs of the project, regulatory approvals and planning permissions.



ARLINGTON PARK



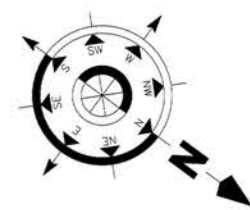
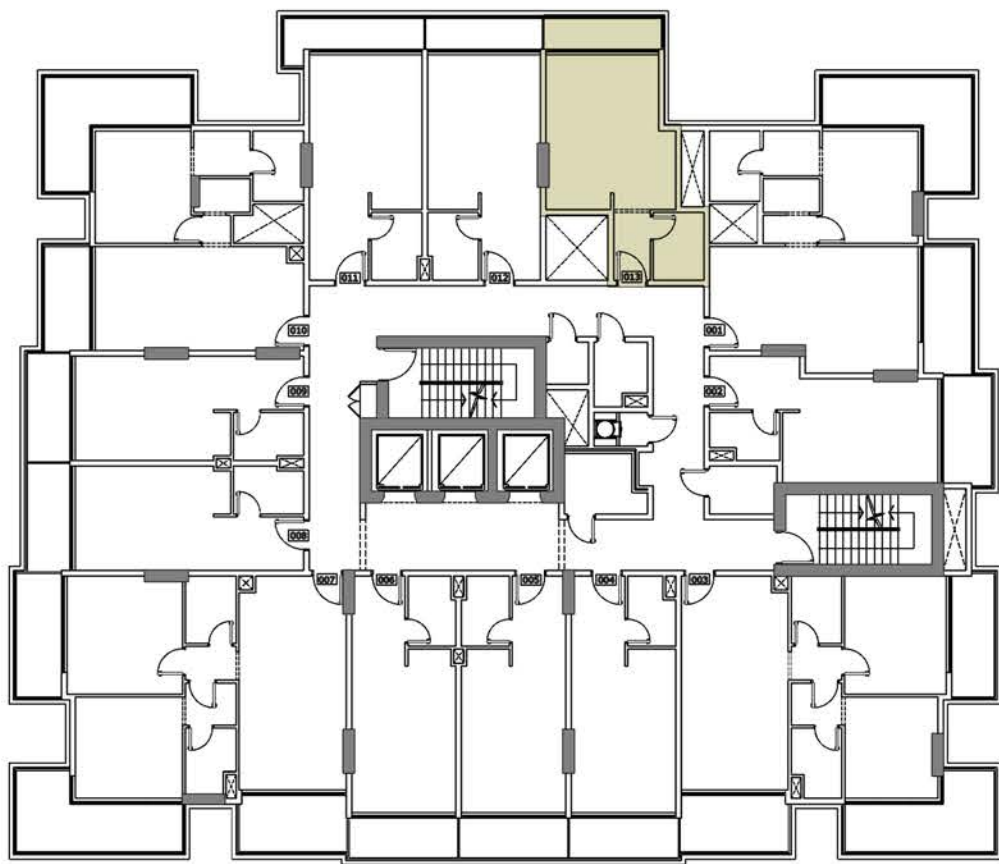
TYPICAL (3,5,7,9 & 11) FLOOR STUDIO APARTMENTS

UNIT AREA	369 Sq. ft.
TERR/BAL AREA	55 Sq. ft.
TOTAL AREA	424 Sq. ft.
UNITS	312,512,712,912 & 1112

Disclaimer: all pictures, plans, layouts, information, data and details included in this brochure are indicative only and may change at any time up to the final 'as built' status in accordance with the final designs of the project, regulatory approvals and planning permissions.



ARLINGTON PARK



TYPICAL (3,5,7,9 & 11) FLOOR STUDIO APARTMENTS

UNIT AREA	370 Sq. ft.
TERR/BAL AREA	56 Sq. ft.
TOTAL AREA	426 Sq. ft.
UNITS	313,513,713,913 & 1113

Disclaimer: all pictures, plans, layouts, information, data and details included in this brochure are indicative only and may change at any time up to the final 'as built' status in accordance with the final designs of the project, regulatory approvals and planning permissions.



ARLINGTON
PARK

MAJID[®]
DEVELOPMENTS

majiddevelopments.com