



LONDON GATE

ESTABLISHED: 2023

HEADQUARTERS: DUBAI, UAE

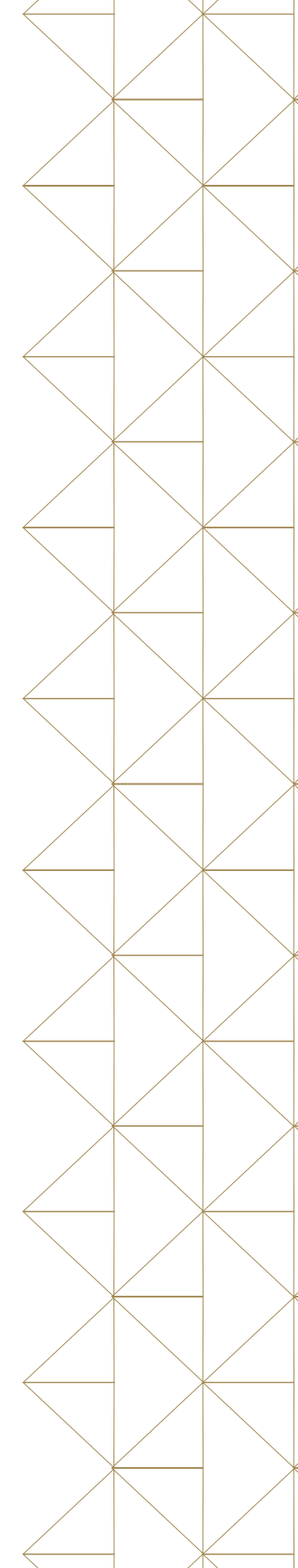
C O R P O R A T E P R O F I L E



The name London Gate is a tribute to the city of London.

A city that is a shining example of modernity embracing its rich, cultural past, reflected in its architecture that is a fusion of the old and the new.

One that has a distinct character and exudes legacy, making it timeless.





OVERVIEW

Extraordinary Living

Having established our reputation in other countries, we are now bringing London's timeless elegance to Dubai's vibrant urban tapestry, resulting in a truly extraordinary living experience.

What began an ambitious vision in 2014 to create truly extraordinary living experiences, is now being brought to life.

With a track record of delivering exceptional properties throughout Dubai, we have become synonymous with unmatched craftsmanship, innovative designs, and an unwavering dedication to quality.



VISION

To be the leading real estate developer in the UAE, renowned for delivering extraordinary, innovative, and elegant living spaces that set new benchmarks in the real estate landscape.

MISSION

At London Gate, our mission is to create distinctive living spaces that embody elegance, sophistication, and attention to detail. We are committed to delivering more than just residential structures, we focus on developing lifestyles and communities that stand the test of time.

Our infrastructure will have a distinct identity that'll make every development stand out from the rest. With a focus on quality, innovation, and unparalleled artistry, we aim to build a trusted reputation as the go-to developer for those seeking a refined lifestyle in the UAE.



PHILOSOPHY

London Gate is dedicated to crafting exceptional residential spaces that harmonize luxury and comfort, elevating lifestyles to new heights.

LUXURY LIVING

We embrace opulence and sophistication, creating residences that epitomize grandeur and exclusivity. With our commitment to unparalleled quality, we redefine the concept of luxury living.

COMFORT

We understand the importance of creating spaces that feel like home, where every resident can unwind and find solace. Our residences exude a sense of warmth, providing a sanctuary amidst the bustle.

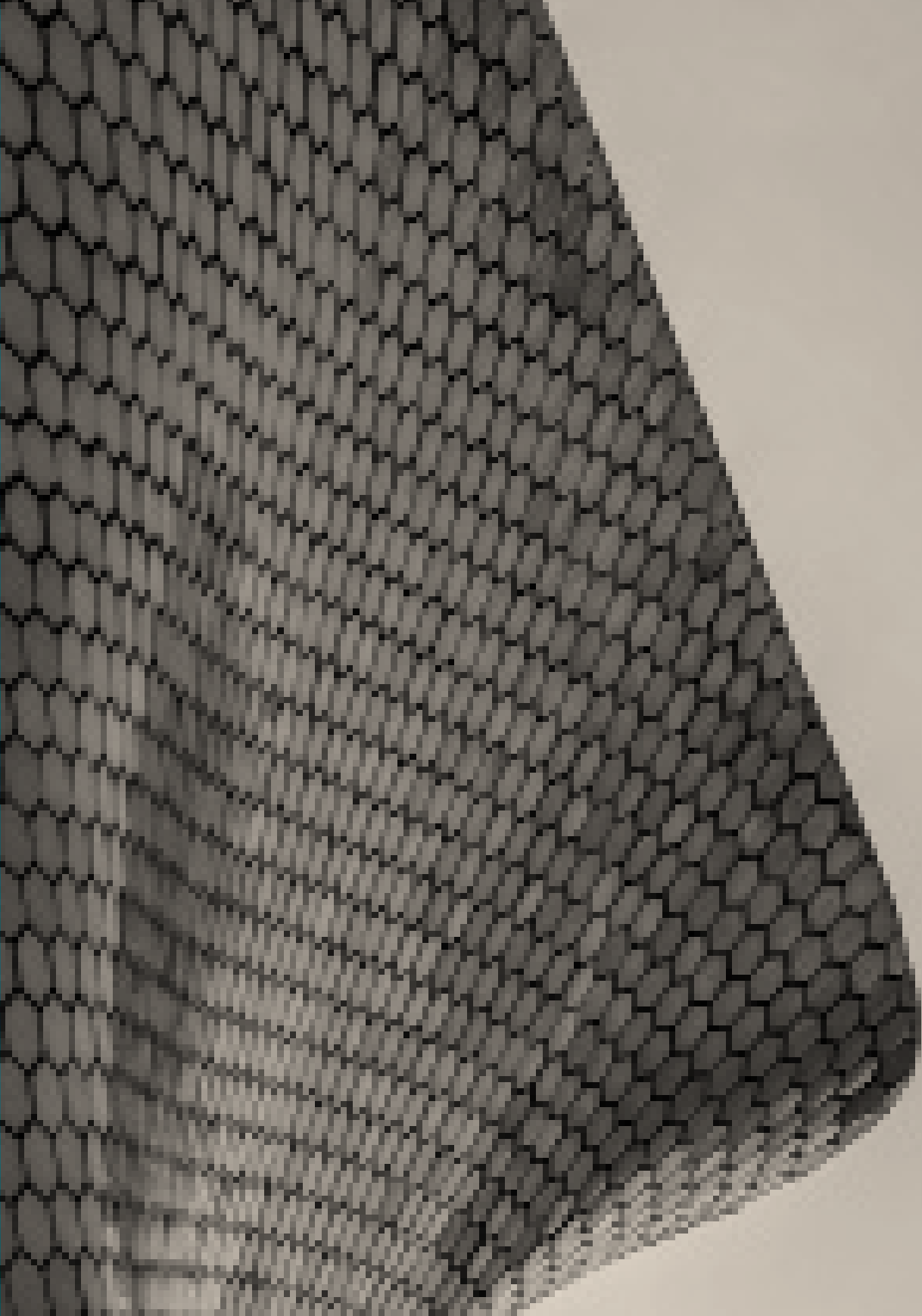


Eman Taha

CEO

Steering London Gate to success with her extensive experience in the industry, Haiden comes with a wealth of knowledge and expertise. She has successfully directed the company to deliver exceptional projects in the UAE real estate space. Her visionary leadership and commitment to excellence have solidified London Gate's reputation as a trusted developer in the UAE.





PORTFOLIO

TAKING THE UAE SKYLINE TO PROLIFIC HEIGHTS

Renowned for our dedication to crafting living spaces that emanate elegance and sophistication, we have earned a reputation as a distinguished developer in the UAE space.

Dubai is one of the world's most coveted locations. Our developments cover Dubai's prominent hotspots, from one of the tallest buildings overlooking the Dubai Marina to residences across Dubailand and Jumeirah Village.



MARINA 106

Developers to one of Dubai Marina's tallest residential buildings.

ICONIC HEIGHT

Soaring 434 meters, it's among Dubai Marina's tallest residential buildings.

EXCLUSIVE RESIDENCES

The 106- storey tower will host 649 luxurious living spaces, including one, two, three, and four-bedroom apartments.

EXQUISITE DUPLEXES

Marina 106 also offers 5 luxury, state-of-the-art, spacious five-bedroom duplex apartments.

ELEGANT PENTHOUSES

Lavish penthouses with breathtaking views and unmatched opulence.

PRESTIGIOUS LOCATION

Nestled in Dubai Marina, offering stunning vistas overlooking the cityscape.



Elegant Penthouses

16 lavish penthouses with breathtaking views and unmatched opulence.



BESPOKE LUXURY

Crafted for the discerning, custom super-luxury sky villas embody the ultimate luxury.

DISTINCTIVE LANDMARK

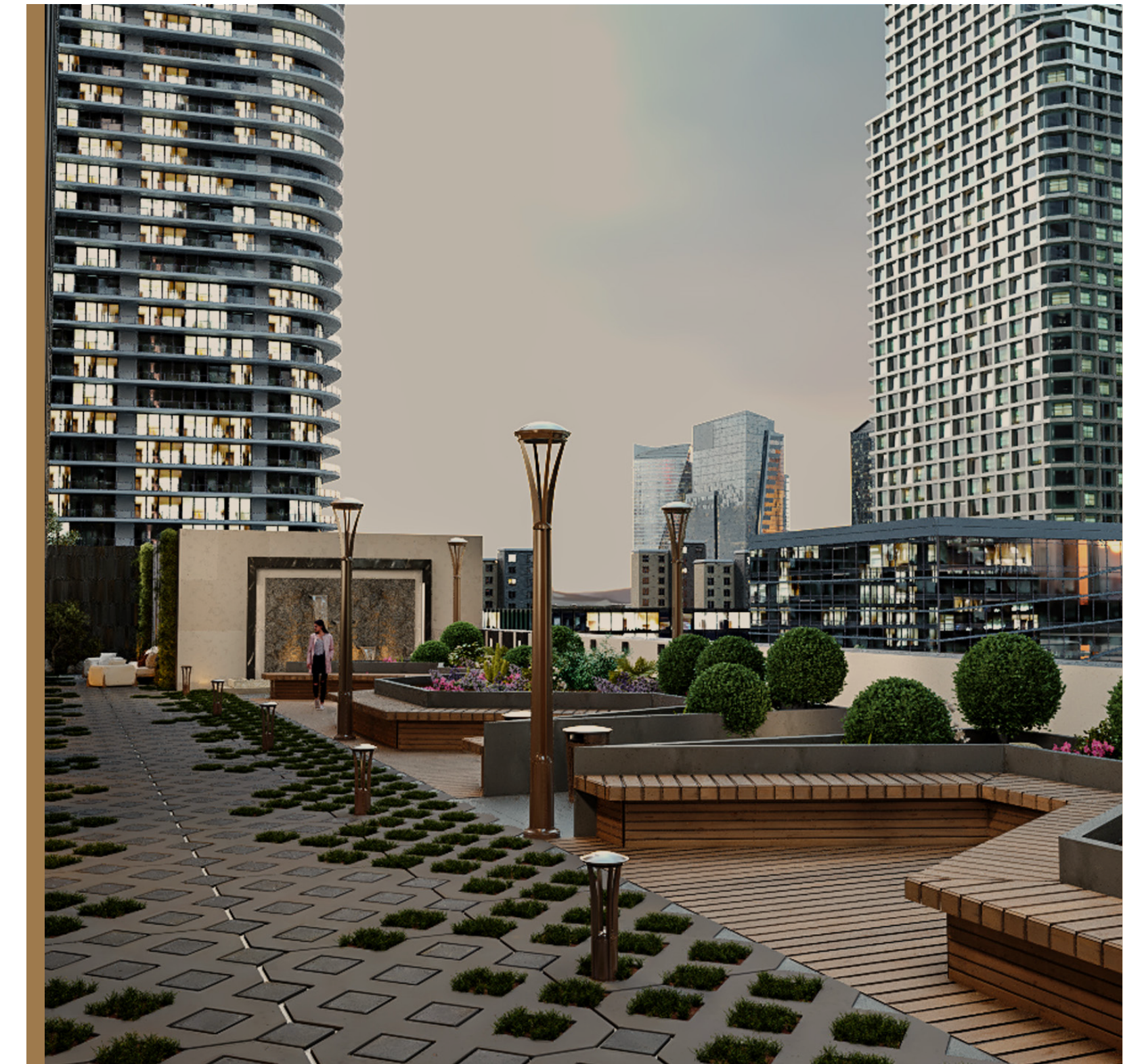
The second tallest building in Dubai Marina, a true architectural masterpiece.

UNPARALLELED AMENITIES

State-of-the-art fitness facilities, indulgent spa retreats, expansive pools, and lush gardens.

IMPECCABLE CRAFTSMANSHIP

Reflecting luxury, the project boasts the finest materials and meticulous attention to detail.





PROJECTS

— ONGOING

— EXISTING

ONGOING

MARINA-I

Dubai Marina

Bask in the Marina scent and embrace Dubai's hottest lifestyle with supreme connectivity.

Take your pick from a studio, one-bedroom, two-bedroom, or three-bedroom residences that inspire greatness.



NADINE I & II

Al Furjan

Thrive in Al Furjan's all-inclusive environment. Inspired by Venetian and Roman Architecture, live the sweet life at Nadine I & II.

Nadine is a short stride away from all prominent hotspots of Dubai and brews within itself an amazing ecosystem of possibilities.



JACOUB-I

Dubai Sports City

Located in the bustling heart of Dubai's adrenaline-fueled locale, Jacoub-I is the perfect place to be.

A collection of studio, one-bedroom, and two-bedroom apartments await your presence.



MAYA-V

Jumeirah Village Triangle

Built on the values of an ecosystem where the dwellers live connected, MAYA-5 is JVT's latest marvel with 1, 2, and 3-bedroom residences that inspire connectivity.

MAYA-V lies in a space that's full of opportunities, family-friendly spaces, and enhanced connectivity to the city.



EXISTING

MAYA-I Jumeirah Village Triangle

Located in the buzzing JVT, Maya-I stands 29 stories strong and unravels timeless elegance.

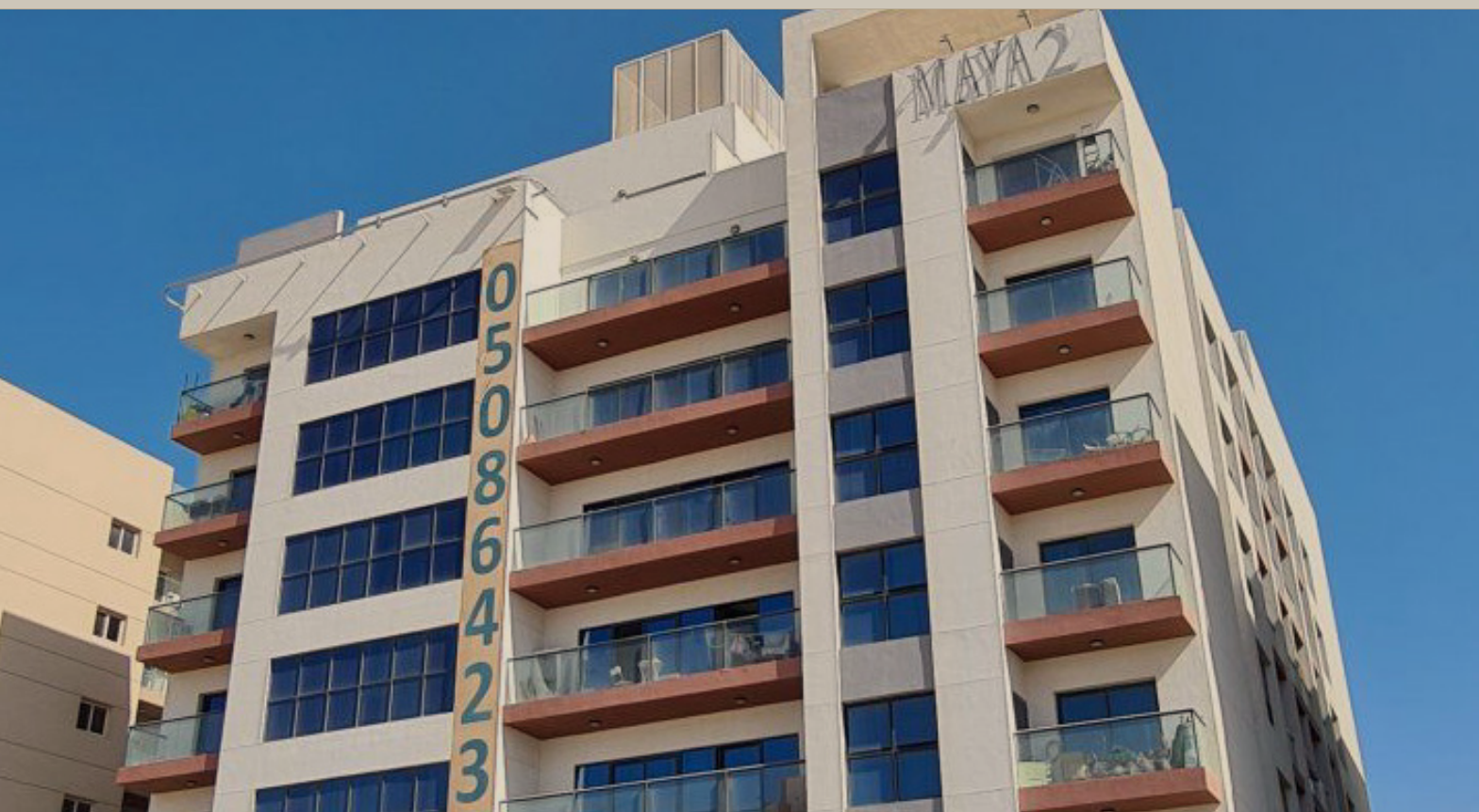
Just a 15 min. drive to Downtown Dubai and 26 min. from Dubai International Airport, it's conveniently placed for the Dubai life.



MAYA-III DubaiLand

After the welcoming reception of the first development in DubaiLand, Maya-III is a clear favorite among its dwellers.

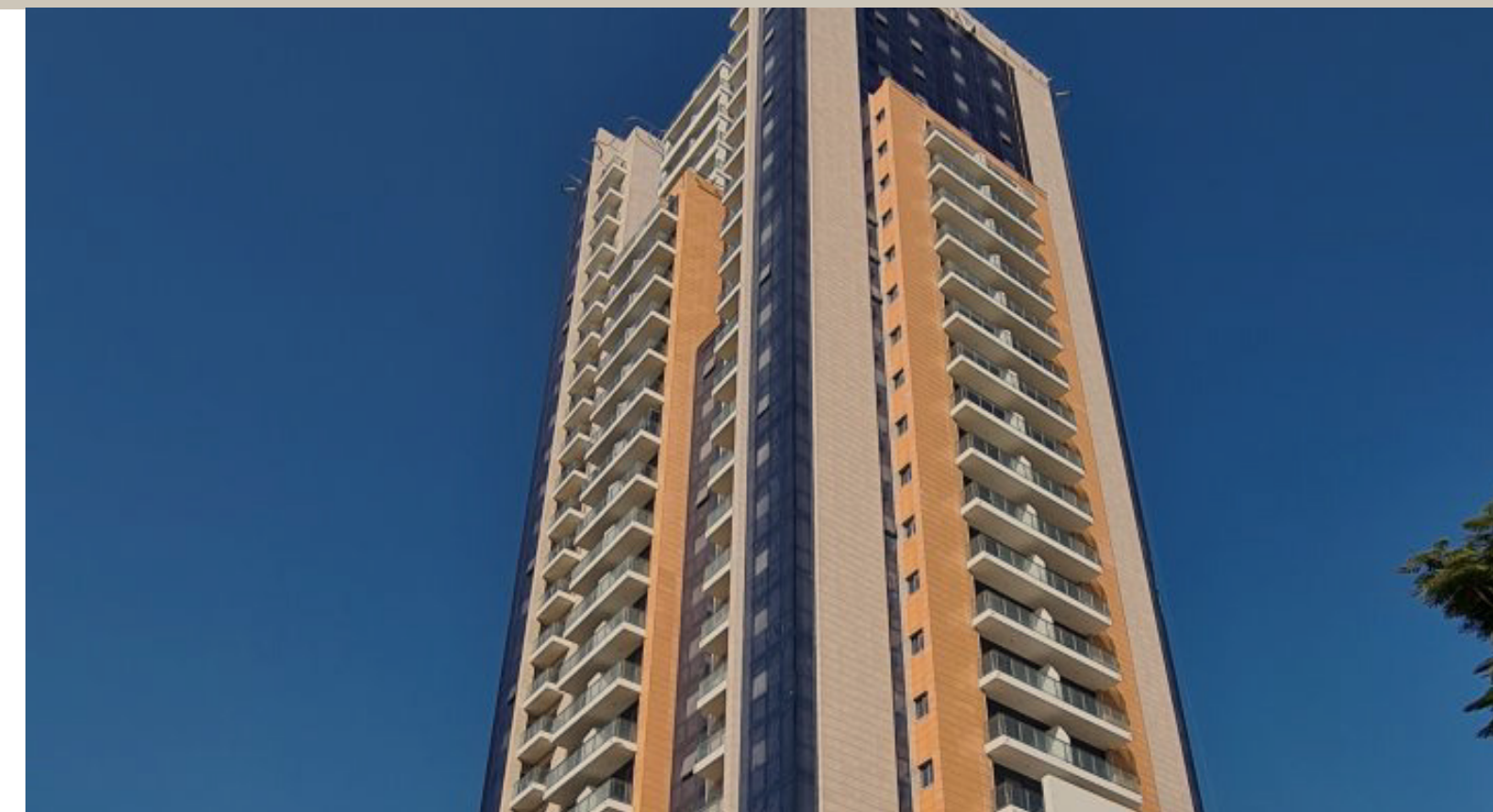
A 20 min. drive from the Dubai international airport and about the same distance away from Downtown Dubai, its strategic connectivity makes it the place to be.



MAYA-II DubaiLand

Nestled in Dubai's latest thriving ecosystem, Maya-II exuberates unmatched lifestyles for all in seven stories.

Just 20 min. away from Downtown Dubai and about the same drive to the Dubai International Airport, its strategic connectivity makes it the place to be.



MAYA-IV Jumeirah Village Triangle

Jumeirah Village Triangle's own 29-storey residences, Maya-IV lies in renowned District-4.

The development is just 20 min. away from Dubai Mall and a 30-minute. drive to the Dubai International Airport.





MARKETING POTENTIAL

THE WAY FORWARD

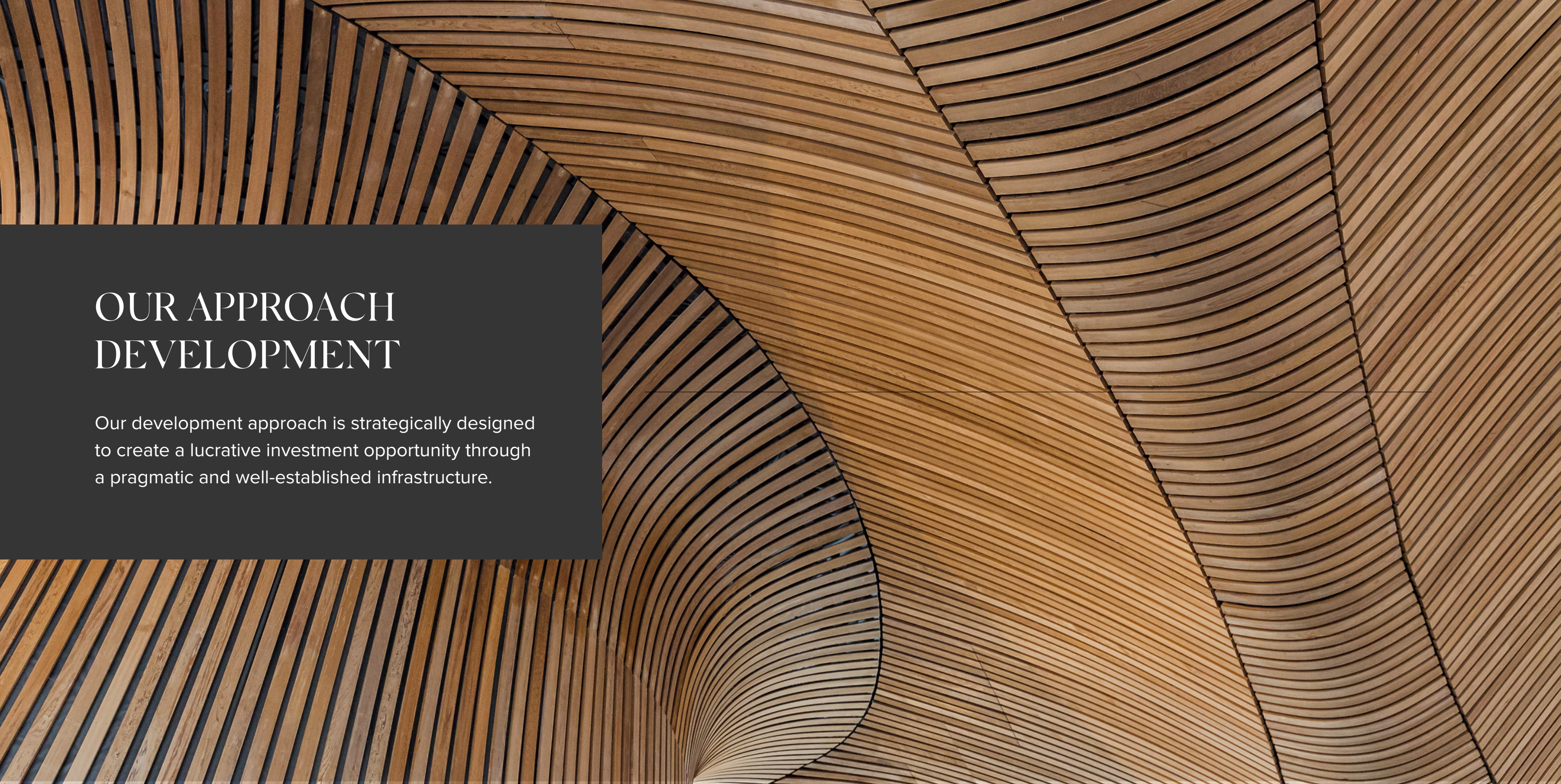
London Gate envisions sophisticated developments and communities, where every detail is carefully considered. Our mission is to reshape Dubai's real estate landscape, setting new benchmarks and surpassing expectations. We are dedicated to creating a refined living experience that exceeds all others in the UAE.

2000

UNITS

In the pipeline

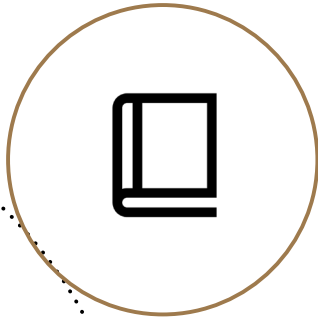
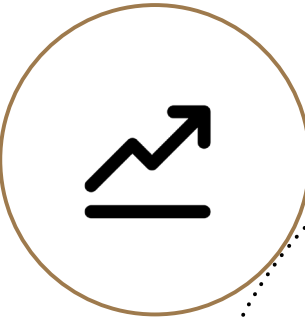




OUR APPROACH DEVELOPMENT

Our development approach is strategically designed to create a lucrative investment opportunity through a pragmatic and well-established infrastructure.

PLANNING
Sales vs Ownership
Return on Investment



FEASIBILITY STUDY
Site selection
Market absorption

STRATEGY
Constructability analysis
Space planning



PRE-DEVELOPMENT
Procurement opportunities
Cost analysis & timelines

INDUSTRY
LEADING
MARKET-INTEL



LONDON GATE

Office 3506 Latifa Towers, Sheikh Zayed Road, Trade Center First, Dubai, UAE
londongate.ae | info@londongate.ae