

LMD°



THE PIER

RESIDENCE

DUBAI MARITIME CITY



WHERE LIFE FLOWS EFFORTLESSLY

# THIS IS HORIZON LIVING

Imagine a place where azure sea  
merges with endless sky.

Where lapping waves crash into a sea of calm.  
This is The Pier Residence, a destination moored in  
the heart of Dubai Maritime City.

More than a testament to a legacy of crafting  
unique locations.

This is your newly chartered way of life.

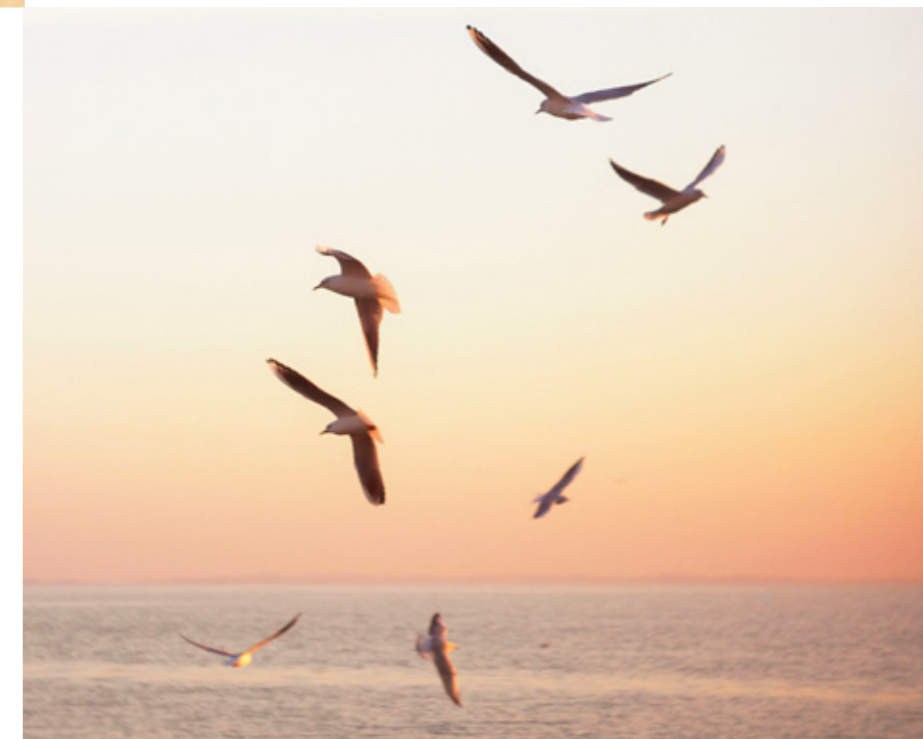
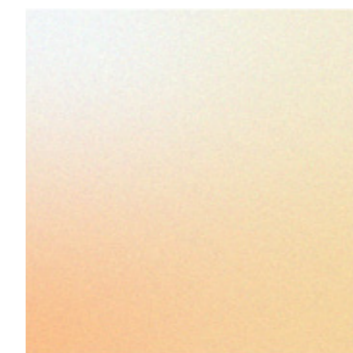




# A WATERFRONT SANCTUARY

Venture into a space where  
effortlessness meets waterfront  
chic, where every detail, from flowing  
lines to soothing hues, captures the  
essence of coastal living.

Feel calm waters and discover design inspired by all that  
surrounds it. Embrace breathtaking views of the Gulf  
which invite the outside in, creating a seamless connection  
between your home and the sea beyond.





RE

# HORIZON LIVING, CHARTERED IN DUBAI

The Pier Residence is a lifestyle with a course set for Maritime City – a dynamic urban destination on the shoreline.



With direct access to the sea, airports, and public transportation, The Pier Residence offers the best of both worlds: the stillness of waterfront living and the convenience of city life. Whether you're commuting to work on Sheikh Zayed Road, jetting off on an international adventure, or exploring the city's vibrant cultural scene, the world is within easy reach. This is the causeway to a 5-minute getaway, where you can escape the hustle and bustle of everyday life and lose yourself in the soft escape of the sea.



## SEAMLESS IN DESIGN

The Pier Residence rises up in a fusion of nautical design and natural beauty.

Its unique form mimics a wave's crest, creating a striking visual exterior that blends with the panoramic expanse.

Each residence enjoys unobstructed views from private balconies that cascade down the front facade, enhancing the connection between indoor refinement and outdoor serenity. These balconies also offer the perfect vantage point for al fresco dining and entertaining.

High-quality materials allow for an interplay of light and shadow, adding an organic touch to the structure's modern facade.



# SET A COURSE FOR CONTENTMENT

Life at The Pier Residence is an invitation to an active, fulfilling life, inspired by Dubai's rich heritage and the spirit of adventure.



Here at the water's edge, you'll find never-ending opportunities for adventure and relaxation. Whether setting sail on a yacht, exploring the coastline on a paddleboard, or simply taking in the scenic waterside, the sea is your invitation to play. The Pier Residence is where your greatest voyage begins, a journey of self-discovery - and so much more.



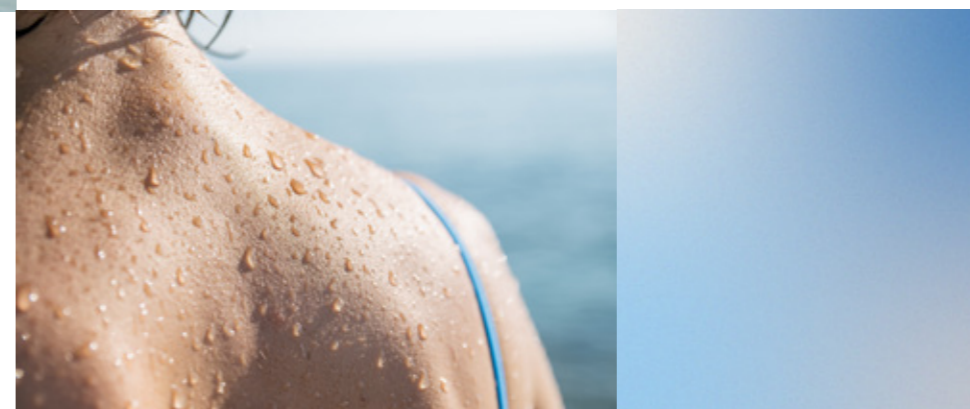


## LIVE IN EBB AND FLOW

The Pier Residence is designed to cater to your every need, with a range of world-class amenities that promote an active, healthy and intrepid lifestyle.

### INFINITY POOL

Swim towards the horizon in a stunning infinity pool, where the water seems to merge seamlessly with the sky.





## STATE OF THE ART GYM

Stay in peak physical condition in a fully-equipped gym, featuring the latest in Life Fitness and Technogym equipment.



State of the Art Gym



PADEL COURT

Challenge friends or neighbours to a friendly match on a state-of-the-art padel court.



## ROOFTOP DECK & POOL

Take in the panoramic views of the Dubai skyline and the Arabian Gulf from an exclusive rooftop deck, an ideal spot for relaxation and stargazing





JOGGING/WALKING TRACK

Enjoy an invigorating jog or a leisurely stroll on a dedicated track, taking in the stunning waterfront views.

YOGA STUDIO

Find inner peace and flexibility in a tranquil yoga studio, bathed in natural light.



RESIDENTS LOUNGE

Mingle with friends and neighbours in a stylish residents' lounge, the perfect setting for casual gatherings and conversations.

INDOOR KIDS' PLAY AREA

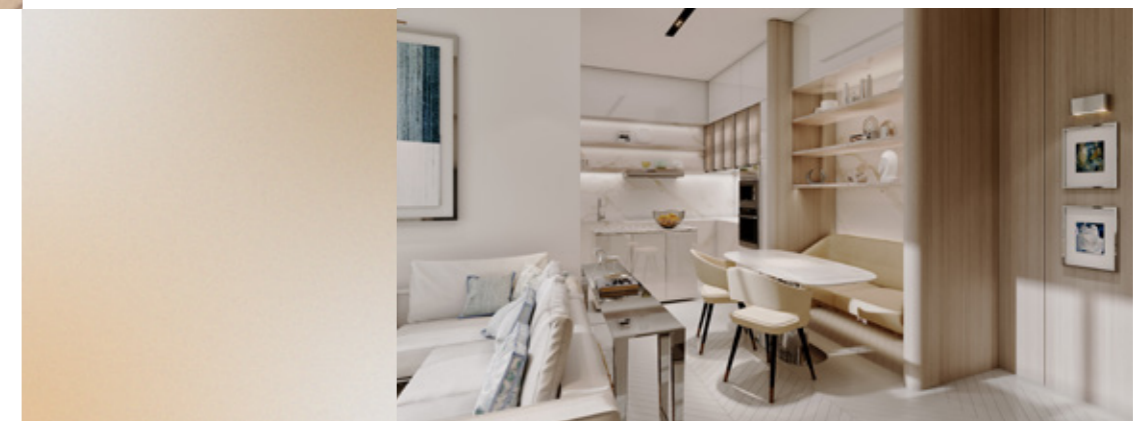
Let the little ones' imaginations run wild in a safe and engaging indoor play area, designed to spark creativity and fun.



## A RESIDENCE, ALL AT SEA

At The Pier Residence, you'll find a curated collection of residences designed to meet your every desire.

Choose from a variety of meticulously designed 1, 2, and 3-bedroom apartments, each offering a seamless blend of comfort, style, and sophistication. Expansive windows flood your living spaces with natural light, while contemporary finishes and nautical-inspired design elements create an atmosphere of refined elegance. Each residence is a testament to LMD's commitment to quality and craftsmanship, ensuring that your home is as exceptional as the lifestyle it offers.





# REFINEMENT, ADRIFT

Your home at The Pier Residence is meant to be a haven of maritime luxury and convenience, meticulously designed to enhance your every day.



LMD



## Smart Home System:

Control your home's lighting, climate, and more with a touch of a button.

## Premium Appliances:

Enjoy the finest appliances from best-in-breed European brands.

## Elegant Furnishings:

Smart electronics, premium sanitaryware, and high-quality statement pieces add a distinguished touch to every home.

## Fine Finishings:

Master carpentry and the highest quality finishes complete the sophisticated aesthetic.

DUBAI'S MARITIME JEWEL

12

minutes from  
Downtown Dubai

15

minutes from  
Dubai Marina

20

minutes from Dubai  
International Airports

25

minutes from  
Expo City



## OUR PARTNERS



**ARCHITECTS**  
UAE

Arkiplan is a globally renowned architectural firm, known for its enthusiasm and expertise. With successful projects worldwide, we specialize in delivering innovative solutions. Our team of architects and engineers handles diverse projects, from hospitality to residential. Our design philosophy prioritizes functionality, budget, and environmental considerations. While aiming for iconic designs, our foremost goal is to address functional needs, garnering acclaim from a satisfied clientele.



**INTERIOR DESIGN**  
SINGAPORE

J2 Design is a specialist in the hospitality sector, designing hotels, resorts and private homes worldwide. Our expertise includes the design of destination resorts, urban and boutique hotels as well as restaurants, bars, nightclubs, casinos, spas and exclusive residences. Our current projects are located in Europe, North Africa, the Middle East, South East Asia, China, The United States and the Caribbean. J2 Design has offices in Manila, Singapore, Barbados, Dubai and London.



**SALES & MARKETING**  
UAE

Devmark was founded in 2018 to address a gap in the marketplace for a company that specializes in providing real estate developers with top-notch development marketing and sales services for residential projects.



The Pier Residence

W RESIDENCES CAIRO & W CAIRO BY GENSLER

LMD

## A BEARING OF EXCELLENCE

**LMD°**



CAIRO DESIGN DISTRICT BY SOM

LMD, the visionary developer behind The Pier Residence, invites you to embark on a journey where the past and the future converge.

With a legacy of creating exceptional living spaces, LMD is committed to crafting communities that inspire and elevate. The Pier Residence is a testament to this commitment, a place where the spirit of Dubai's maritime heritage meets the aspirations of modern living.

# ABOUT LMD

TRUE TO YOU

Crafting transformative residential and commercial experiences has been LMD’s dedicated pursuit since 2007.

An ever-evolving journey of exceptional innovation with the future in mind.

Our signature is larger-than-life destinations that set the benchmark in quality integration & progressive design. We inspire limitless possibilities that empower communities to live, connect, and thrive — a combination that truly sets us apart.

Our journey resulted in a significant portfolio of iconic mixed- use developments. Spanning the best locations in Egypt, UAE, Spain, and Greece. We offer community-centric experiences powered by a holistic vision of seamless living — forever transforming the conventional norms of real estate.

# LMD JOURNEY

TAKING THE WORLD BY STORM

LMD is committed to geographic expansion that reflects its distinctive vision of a world in search of premium developments that transcend the ordinary in every aspect.

In 2011, the company embarked on a growth journey by founding Continental Investments LMD Company, conceiving its first hallmark project in Dubai Marina; The Continental Tower. In pursuit of continued success was the launch of Rukan’s residential community in Dubai Land to transform integrated living in the region’s beating heart.

In no time, setting a foothold in Europe was an inevitable and strategic move to land LMD in Barcelona, Spain with a world- class address 91 Muntaner, and Greece by the Mediterranean Sea with Athines By the Sea.

# OUR EXPANSIVE PORTFOLIO

## AN UNRIVALED FOOTPRINT OF TRANSFORMATION

UAE

- Continental Tower - Residential - Marina - Dubai
- Rukan - Mixed-use development & Residential - Dubai Land
- Marina Living - Residential - Dubai Marina - Dubai
- Boutique XII - Residential - AlJaddaf - Dubai
- Boutique 23 - Residential - AlJaddaf - Dubai
- La Boutique - Residential - AlJaddaf - Dubai

Egypt

- Steisht - Mixed-use development & Residential - New Cairo Eastside - Commercial Destination - New Cairo
- One Ninety - Mixed-use development - (Commercial, Retail & Offices) - New Cairo
- W Residences Cairo - Branded Residences - New Cairo
- Cairo Design District - Commercial & Hospitality - New Cairo 3'Sixty - Commercial (Retail, Offices, Clinics) - Golden Square, New Cairo
- Zoya - Second home - Coastal Living - Ghazala Bay, North Coast
- Layan Residence - Residential - Golden Square, New Cairo
- Aria - Residential - Mostakbal City, New Cairo

Spain

- Muntaner 91 - Residential - Barcelona

Greece

- Athines By The Sea - Hospitality - Voula - Athens Karaiskaki 15 - Residential - Voula - Athens Asklipiou 67 - Residential - Voula - Athens Omirou 31 - Residential - Glyfada - Athens Archimidous 5 - Residential - Glyfada - Athens



# YOUR GREATEST VOYAGE STARTS HERE

The Pier Residence is your next great journey. A lifestyle investment that promises to enrich in countless ways.

Contact us today to embark on a journey of discovery and secure your place in this waterfront haven.





**LMD°**